

Phospho-CREB1-S133 Rabbit mAb

Catalog No.: AP1421 **Recombinant** **2 Publications**

Basic Information

Observed MW

Refer to figures

Calculated MW

35kDa

Category

Primary antibody

Applications

IHC-P, ELISA

Cross-Reactivity

Human, Mouse, Rat

CloneNo number

ARC60280

Background

This gene encodes a transcription factor that is a member of the leucine zipper family of DNA binding proteins. This protein binds as a homodimer to the cAMP-responsive element, an octameric palindrome. The protein is phosphorylated by several protein kinases, and induces transcription of genes in response to hormonal stimulation of the cAMP pathway. Alternate splicing of this gene results in several transcript variants encoding different isoforms.

Recommended Dilutions

IHC-P 1:50 - 1:200

ELISA Recommended starting concentration is 1 µg/mL. Please optimize the concentration based on your specific assay requirements.

Immunogen Information

Gene ID

1385

Swiss Prot

P16220

Immunogen

Synthetic peptide. This information is considered to be commercially sensitive.

Synonyms

CREB; CREB-1; Phospho-CREB1-S133

Contact

☎ | 400-999-6126

✉ | cn.market@abclonal.com.cn

🌐 | www.abclonal.com.cn

Product Information

Source

Rabbit

Isotype

IgG

Purification

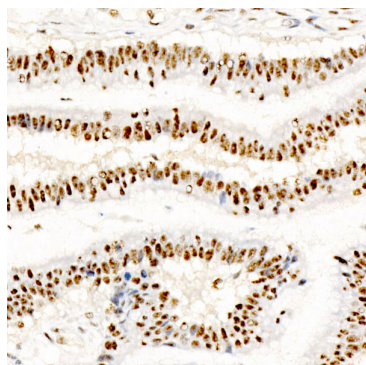
Affinity purification

Storage

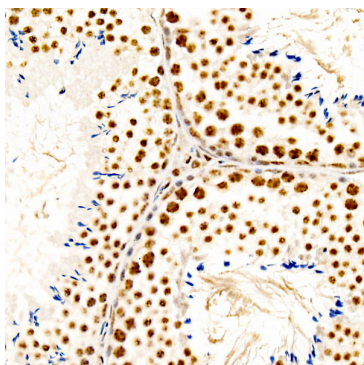
Store at -20°C. Avoid freeze / thaw cycles.

Buffer: PBS containing 50% glycerol and 0.05% BSA, preserved with proclin300 or sodium azide (as specified on the Certificate of Analysis), pH 7.3.

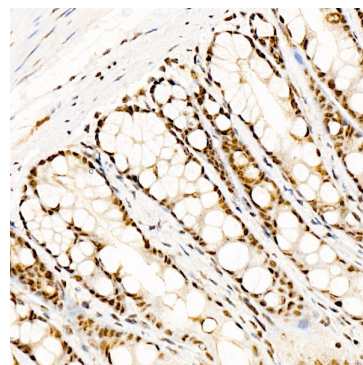
Validation Data



Immunohistochemistry analysis of paraffin-embedded Human colon carcinoma using Phospho-CREB1-S133 Rabbit mAb (AP1421) at dilution of 1:100 (40x lens). High pressure antigen retrieval performed with 0.01M Citrate buffer (pH 6.0) prior to IHC staining.



Immunohistochemistry analysis of paraffin-embedded Mouse testis using Phospho-CREB1-S133 Rabbit mAb (AP1421) at dilution of 1:100 (40x lens). High pressure antigen retrieval performed with 0.01M Citrate buffer (pH 6.0) prior to IHC staining.



Immunohistochemistry analysis of paraffin-embedded Rat colon using Phospho-CREB1-S133 Rabbit mAb (AP1421) at dilution of 1:100 (40x lens). High pressure antigen retrieval performed with 0.01M Citrate buffer (pH 6.0) prior to IHC staining.