

Phospho-Smad5-S465 Rabbit mAb

Catalog No.: AP1411 **Recombinant**

Basic Information

Observed MW

52 kDa/60 kDa

Calculated MW

52 kDa

Category

Primary antibody

Applications

WB, ELISA

Cross-Reactivity

Human, Mouse, Rat

CloneNo number

ARC59204

Background

The protein encoded by this gene is involved in the transforming growth factor beta signaling pathway that results in an inhibition of the proliferation of hematopoietic progenitor cells. The encoded protein is activated by bone morphogenetic proteins type 1 receptor kinase, and may be involved in cancer. Alternative splicing results in multiple transcript variants.

Recommended Dilutions

WB 1:1000 - 1:5000

ELISA Recommended starting concentration is 1 µg/mL. Please optimize the concentration based on your specific assay requirements.

Immunogen Information

Gene ID

4090

Swiss Prot

Q99717

Immunogen

Synthetic peptide. This information is considered to be commercially sensitive.

Synonyms

DWFC; JV5-1; MADH5; Phospho-Smad5-S465

Contact

 | 400-999-6126

 | cn.market@abclonal.com.cn

 | www.abclonal.com.cn

Product Information

Source

Rabbit

Isotype

IgG

Purification

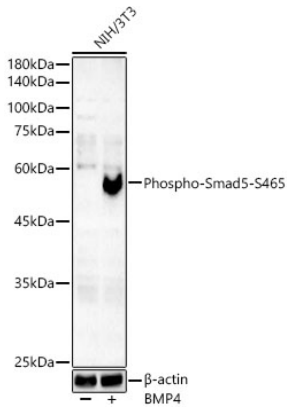
Affinity purification

Storage

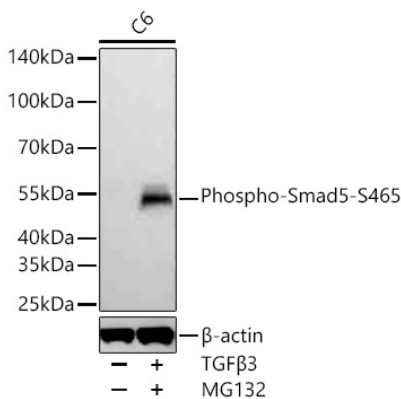
Store at -20°C. Avoid freeze / thaw cycles.

Buffer: PBS containing 50% glycerol and 0.05% BSA, preserved with proclin300 or sodium azide (as specified on the Certificate of Analysis), pH 7.3.

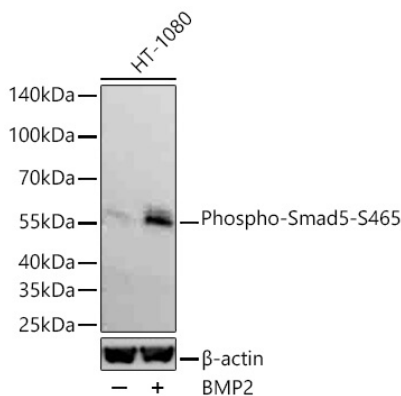
Validation Data



Western blot analysis of lysates from NIH/3T3 cells, using Phospho-Smad5-S465 Rabbit mAb (AP1411) at 1:2000 dilution. NIH/3T3 cells were treated with BMP4(50ng/ml) at 37°C for 6 hours.
Secondary antibody: HRP-conjugated Goat anti-Rabbit IgG (H+L) (AS014) at 1:10000 dilution.
Lysates/proteins: 25µg per lane.
Blocking buffer: 3% nonfat dry milk in TBST.
Detection: ECL Basic Kit (RM00020).
Exposure time: 180s.



Western blot analysis of lysates from C6 cells using Phospho-Smad5-S465 Rabbit mAb (AP1411) at 1:1000 dilution incubated overnight at 4°C. C6 cells were treated with TGFβ3 (10 ng/mL) and MG132 (10 µM) for 30 minutes after serum starvation.
Secondary antibody: HRP-conjugated Goat anti-Rabbit IgG (H+L) (AS014) at 1:10000 dilution.
Lysates/proteins: 30 µg per lane.
Blocking buffer: 3 % nonfat dry milk in TBST.
Detection: ECL Basic Kit (RM00020).
Exposure time: 20 s.



Western blot analysis of lysates from HT-1080 cells using Phospho-Smad5-S465 Rabbit mAb (AP1411) at 1:1000 dilution incubated overnight at 4°C. HT-1080 cells were treated with BMP2 (50 ng/mL) for 30 minutes after serum starvation.
Secondary antibody: HRP-conjugated Goat anti-Rabbit IgG (H+L) (AS014) at 1:10000 dilution.
Lysates/proteins: 30 µg per lane.
Blocking buffer: 3 % nonfat dry milk in TBST.
Detection: ECL Basic Kit (RM00020).
Exposure time: 90 s.