

Phospho-NF- κ B2-S866/S870 Rabbit mAb

Catalog No.: AP1391 **Recombinant** **2 Publications**

Basic Information

Observed MW

110kDa

Calculated MW

97kDa

Category

Primary antibody

Applications

WB,IHC-P,ELISA

Cross-Reactivity

Human, Mouse

CloneNo number

ARC57764

Background

This gene encodes a subunit of the transcription factor complex nuclear factor-kappa-B (NFkB). The NFkB complex is expressed in numerous cell types and functions as a central activator of genes involved in inflammation and immune function. The protein encoded by this gene can function as both a transcriptional activator or repressor depending on its dimerization partner. The p100 full-length protein is co-translationally processed into a p52 active form. Chromosomal rearrangements and translocations of this locus have been observed in B cell lymphomas, some of which may result in the formation of fusion proteins. There is a pseudogene for this gene on chromosome 18. Alternative splicing results in multiple transcript variants.

Recommended Dilutions

WB 1:1000 - 1:5000

IHC-P 1:50 - 1:200

ELISA Recommended starting concentration is 1 μ g/mL. Please optimize the concentration based on your specific assay requirements.

Immunogen Information

Gene ID

4791

Swiss Prot

Q00653

Immunogen

Synthetic peptide. This information is considered to be commercially sensitive.

Synonyms

p52; p100; H2TF1; LYT10; CVID10; LYT-10; NF-kB2; p49/p100; Phospho-NF- κ B2-S866/S870

Contact

 | 400-999-6126

 | cn.market@abclonal.com.cn

 | www.abclonal.com.cn

Product Information

Source

Rabbit

Isotype

IgG

Purification

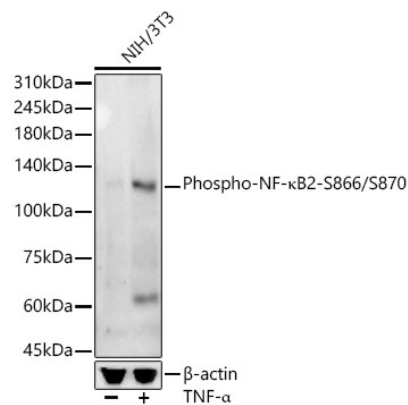
Affinity purification

Storage

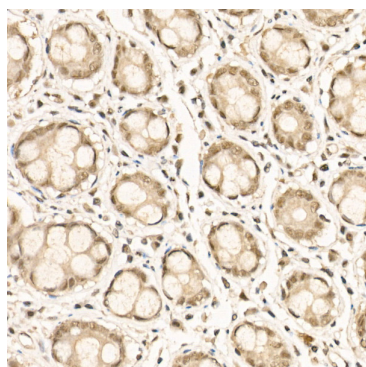
Store at -20°C. Avoid freeze / thaw cycles.

Buffer: PBS with 0.09% Sodium azide,0.05% BSA,50% glycerol,pH7.3.

Validation Data



Western blot analysis of lysates from NIH/3T3 cells, using Phospho-NF-κB2-S866/S870 Rabbit mAb (AP1391) at 1:4000 dilution. NIH/3T3 cells were treated with TNF-α (20 ng/ml) at 37°C for 30 minutes. Secondary antibody: HRP-conjugated Goat anti-Rabbit IgG (H+L) (AS014) at 1:10000 dilution. Lysates/proteins: 25µg per lane. Blocking buffer: 3% nonfat dry milk in TBST. Detection: ECL Basic Kit (RM00020). Exposure time: 180s.



Immunohistochemistry analysis of paraffin-embedded Human colon carcinoma using Phospho-NF-κB2-S866/S870 Rabbit mAb (AP1391) at dilution of 1:100 (40x lens). High pressure antigen retrieval performed with 0.01M Citrate buffer (pH 6.0) prior to IHC staining.