

Phospho-Camk2-T286 Rabbit mAb

Catalog No.: AP1386

Recombinant

5 Publications

Basic Information

Observed MW

50kDa

Calculated MW

54kDa

Category

Primary antibody

Applications

WB, ELISA

Cross-Reactivity

Mouse, Rat

CloneNo number

ARC57709

Background

The product of this gene belongs to the serine/threonine protein kinases family, and to the Ca²⁺/calmodulin-dependent protein kinases subfamily. Calcium signaling is crucial for several aspects of plasticity at glutamatergic synapses. This calcium calmodulin-dependent protein kinase is composed of four different chains: alpha, beta, gamma, and delta. The alpha chain encoded by this gene is required for hippocampal long-term potentiation (LTP) and spatial learning. In addition to its calcium-calmodulin (CaM)-dependent activity, this protein can undergo autophosphorylation, resulting in CaM-independent activity. Several transcript variants encoding distinct isoforms have been identified for this gene.

Recommended Dilutions

WB 1:1000 - 1:5000**ELISA** Recommended starting concentration is 1 µg/mL. Please optimize the concentration based on your specific assay requirements.

Immunogen Information

Gene ID

816/817/818/815

Swiss Prot

Q13554/Q13557/Q13555/Q9UQM7

Immunogen

Synthetic peptide. This information is considered to be commercially sensitive.

Synonyms

CAMKA; MRD53; MRT63; CaMKIIalpha; CaMKIINalpha; CAM2; CAMK2; CAMKB; MRD54; CaMKIIbeta; CAMKD; CAMK; CAMKG; MRD59; CAMK-II; Phospho-Camk2-T286

Contact

 | 400-999-6126 | cn.market@abclonal.com.cn | www.abclonal.com.cn

Product Information

Source

Rabbit

Isotype

IgG

Purification

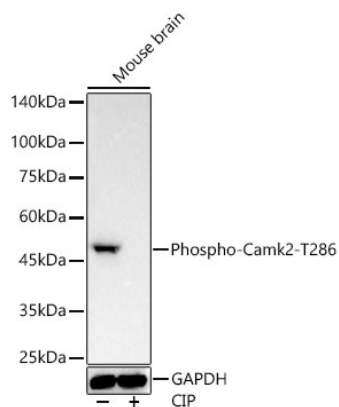
Affinity purification

Storage

Store at -20°C. Avoid freeze / thaw cycles.

Buffer: PBS containing 50% glycerol and 0.05% BSA, preserved with proclin300 or sodium azide (as specified on the Certificate of Analysis), pH 7.3.

Validation Data



Western blot analysis of various lysates, using Phospho-Camk2-T286 Rabbit mAb (AP1386) at 1:5000 dilution. Mouse brain cells were treated by CIP(20uL/400ul) at 37°C for 1 hour.

Secondary antibody: HRP-conjugated Goat anti-Rabbit IgG (H+L) (AS014) at 1:10000 dilution.

Lysates/proteins: 25µg per lane.

Blocking buffer: 3% nonfat dry milk in TBST.

Detection: ECL Basic Kit (RM00020).

Exposure time: 180s.