

Phospho-Bad-S112 Rabbit mAb

Catalog No.: AP1371 **Recombinant**

Basic Information

Observed MW

23kDa

Calculated MW

18kDa

Category

Primary antibody

Applications

ELISA, WB, IHC-P

Cross-Reactivity

Human, Mouse, Rat

CloneNo number

ARC57988

Background

The protein encoded by this gene is a member of the BCL-2 family. BCL-2 family members are known to be regulators of programmed cell death. This protein positively regulates cell apoptosis by forming heterodimers with BCL-xL (B-cell lymphoma-extra large) and BCL-2, and reversing their death repressor activity. Proapoptotic activity of this protein is regulated through its phosphorylation. Protein kinases AKT and MAP kinase, as well as protein phosphatase calcineurin were found to be involved in the regulation of this protein. Alternative splicing of this gene results in two transcript variants which encode the same isoform.

Recommended Dilutions

WB 1:2000 - 1:8000

IHC-P 1:500 - 1:1000

Immunogen Information

Gene ID

572

Swiss Prot

Q92934

Immunogen

A phospho specific peptide corresponding to residues surrounding S112 of human Bad.

Synonyms

BBC2; BCL2L8; Phospho-Bad-S112

Contact

☎ | 400-999-6126

✉ | cn.market@abclonal.com.cn

🌐 | www.abclonal.com.cn

Product Information

Source

Rabbit

Isotype

IgG

Purification

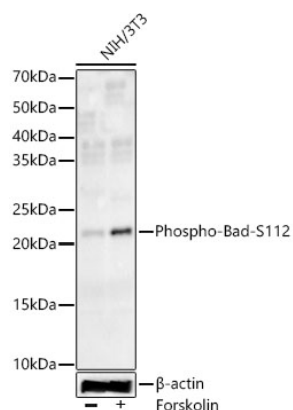
Affinity purification

Storage

Store at -20°C. Avoid freeze / thaw cycles.

Buffer: PBS with 0.05% proclin300, 0.05% BSA, 50% glycerol, pH7.3.

Validation Data



Western blot analysis of lysates from NIH/3T3 cells, using Phospho-Bad-S112 Rabbit mAb (AP1371) at 1:7000 dilution. NIH/3T3 cells were treated by Forskolin (30 μ M) at 37°C for 30 minutes after serum-starvation overnight.

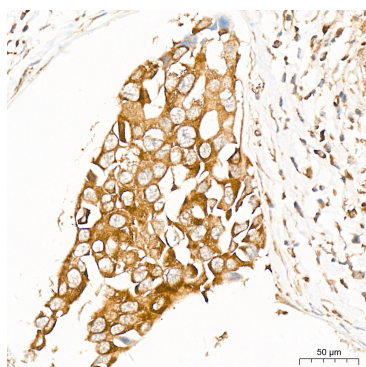
Secondary antibody: HRP Goat Anti-Rabbit IgG (H+L) (AS014) at 1:10000 dilution.

Lysates/proteins: 25 μ g per lane.

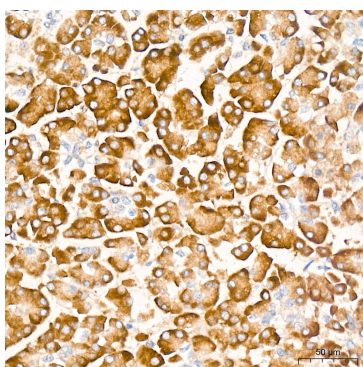
Blocking buffer: 3% nonfat dry milk in TBST.

Detection: ECL Enhanced Kit (RM00021).

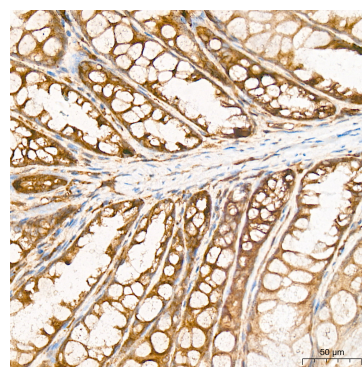
Exposure time: 180s.



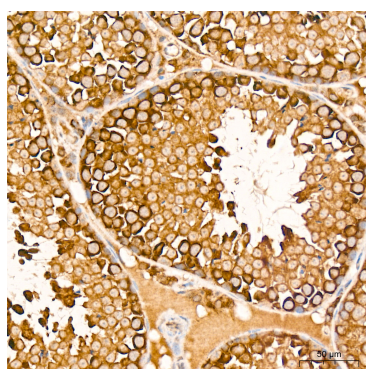
Immunohistochemistry analysis of Phospho-Bad-S112 in paraffin-embedded human breast cancer tissue using Phospho-Bad-S112 Rabbit mAb (AP1371) at a dilution of 1:1000 (40x lens). High pressure antigen retrieval was performed with 0.01 M citrate buffer (pH 6.0) prior to IHC staining.



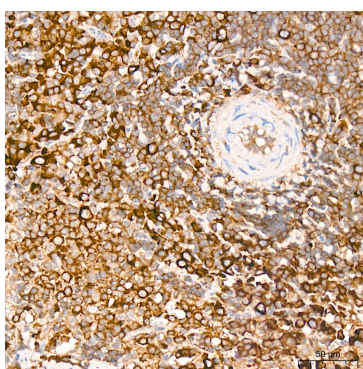
Immunohistochemistry analysis of Phospho-Bad-S112 in paraffin-embedded human pancreas tissue using Phospho-Bad-S112 Rabbit mAb (AP1371) at a dilution of 1:1000 (40x lens). High pressure antigen retrieval was performed with 0.01 M citrate buffer (pH 6.0) prior to IHC staining.



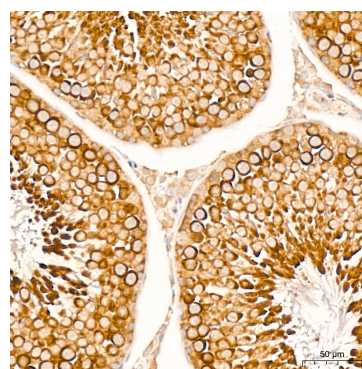
Immunohistochemistry analysis of Phospho-Bad-S112 in paraffin-embedded mouse colon tissue using Phospho-Bad-S112 Rabbit mAb (AP1371) at a dilution of 1:1000 (40x lens). High pressure antigen retrieval was performed with 0.01 M citrate buffer (pH 6.0) prior to IHC staining.



Immunohistochemistry analysis of Phospho-Bad-S112 in paraffin-embedded mouse testis tissue using Phospho-Bad-S112 Rabbit mAb (AP1371) at a dilution of 1:1000 (40x lens). High pressure antigen retrieval was performed with 0.01 M citrate buffer (pH 6.0) prior to IHC staining.



Immunohistochemistry analysis of Phospho-Bad-S112 in paraffin-embedded rat spleen tissue using Phospho-Bad-S112 Rabbit mAb (AP1371) at a dilution of 1:1000 (40x lens). High pressure antigen retrieval was performed with 0.01 M citrate buffer (pH 6.0) prior to IHC staining.



Immunohistochemistry analysis of Phospho-Bad-S112 in paraffin-embedded rat testis tissue using Phospho-Bad-S112 Rabbit mAb (AP1371) at a dilution of 1:1000 (40x lens). High pressure antigen retrieval was performed with 0.01 M citrate buffer (pH 6.0) prior to IHC staining.