

Phospho-Ubiquitin-Ser65 Rabbit pAb

Catalog No.: AP1368

Basic Information

Observed MW

10-250kDa

Calculated MW

18kDa/15kDa/77kDa

Category

Primary antibody

Applications

WB, ELISA

Cross-Reactivity

Human

Background

Ubiquitin is a highly conserved nuclear and cytoplasmic protein that has a major role in targeting cellular proteins for degradation by the 26S proteasome. It is also involved in the maintenance of chromatin structure, the regulation of gene expression, and the stress response. Ubiquitin is synthesized as a precursor protein consisting of either polyubiquitin chains or a single ubiquitin moiety fused to an unrelated protein. This gene encodes a fusion protein consisting of ubiquitin at the N terminus and ribosomal protein L40 at the C terminus, a C-terminal extension protein (CEP). Multiple processed pseudogenes derived from this gene are present in the genome.

Recommended Dilutions

WB 1:100 - 1:500**ELISA** Recommended starting concentration is 1 µg/mL. Please optimize the concentration based on your specific assay requirements.

Immunogen Information

Gene ID

6233/7311/7314/7316

Swiss Prot

P62979/P62987/P0CG47/P0CG48

Immunogen

Synthetic peptide. This information is considered to be commercially sensitive.

Synonyms

UBC; S27A; CEP80; UBA80; HEL112; UBCEP1; UBCEP80; L40; CEP52; RPL40; HUBCEP52; HEL-S-50; HMG20; Phospho-Ubiquitin-Ser65

Contact

 | 400-999-6126 | cn.market@abclonal.com.cn | www.abclonal.com.cn

Product Information

Source

Rabbit

Isotype

IgG

Purification

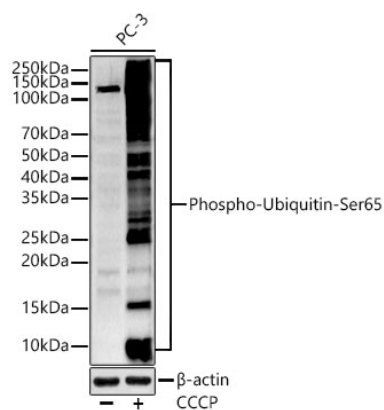
Affinity purification

Storage

Store at -20°C. Avoid freeze / thaw cycles.

Buffer: PBS containing 50% glycerol and 0.05% BSA, preserved with proclin300 or sodium azide (as specified on the Certificate of Analysis), pH 7.3.

Validation Data



Western blot analysis of lysates from PC-3 cells, using Phospho-Ubiquitin-Ser65 Rabbit pAb (AP1368) at 1:400 dilution. PC-3 cells were treated with Carbonyl cyanide 3-chlorophenylhydrazone(10 uM) at 37°C for 6 hours after serum-starvation overnight.
Secondary antibody: HRP-conjugated Goat anti-Rabbit IgG (H+L) (AS014) at 1:10000 dilution.
Lysates/proteins: 25µg per lane.
Blocking buffer: 3% nonfat dry milk in TBST.
Detection: ECL Enhanced Kit (RM00021).
Exposure time: 60s.