

Phospho-eIF4EBP1-S65 Rabbit mAb

Catalog No.: AP1363

Recombinant

7 Publications

Basic Information

Observed MW

15-20kDa

Calculated MW

13kDa

Category

Primary antibody

Applications

WB, ELISA

Cross-Reactivity

Human, Mouse

CloneNo number

ARC53775

Background

This gene encodes one member of a family of translation repressor proteins. The protein directly interacts with eukaryotic translation initiation factor 4E (eIF4E), which is a limiting component of the multisubunit complex that recruits 40S ribosomal subunits to the 5' end of mRNAs. Interaction of this protein with eIF4E inhibits complex assembly and represses translation. This protein is phosphorylated in response to various signals including UV irradiation and insulin signaling, resulting in its dissociation from eIF4E and activation of mRNA translation.

Recommended Dilutions

WB 1:1000 - 1:12000

ELISA Recommended starting concentration is 1 µg/mL. Please optimize the concentration based on your specific assay requirements.

Immunogen Information

Gene ID

1978

Swiss Prot

Q13541

Immunogen

Synthetic peptide. This information is considered to be commercially sensitive.

Synonyms

BP-1; 4EBP1; 4E-BP1; PHAS-I; Phospho-eIF4EBP1-S65

Contact

☎ | 400-999-6126

✉ | cn.market@abclonal.com.cn

🌐 | www.abclonal.com.cn

Product Information

Source

Rabbit

Isotype

IgG

Purification

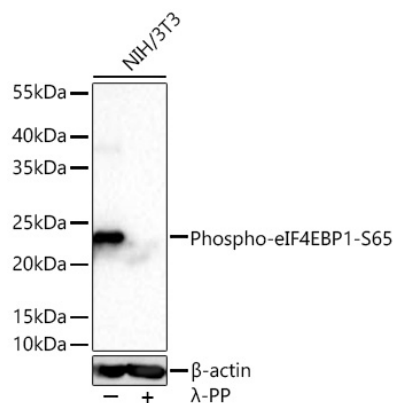
Affinity purification

Storage

Store at -20°C. Avoid freeze / thaw cycles.

Buffer: PBS containing 50% glycerol and 0.05% BSA, preserved with proclin300 or sodium azide (as specified on the Certificate of Analysis), pH 7.3.

Validation Data



Western blot analysis of lysates from NIH/3T3 cells using Phospho-eIF4EBP1-S65 Rabbit mAb (AP1363) at 1:1000 dilution incubated at room temperature for 1.5 hours. NIH/3T3 cells were treated with λ-PP mixed solution (1ul) at 30°C for 30 minutes.

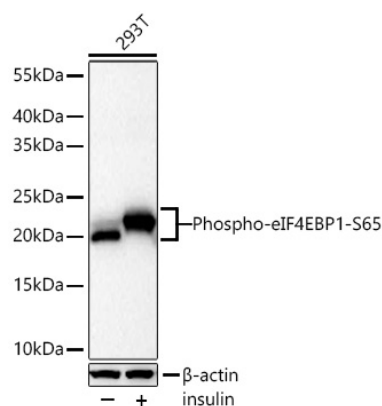
Secondary antibody: HRP-conjugated Goat anti-Rabbit IgG (H+L) (AS014) at 1:10000 dilution.

Lysates/proteins: 30 µg per lane.

Blocking buffer: 3 % nonfat dry milk in TBST.

Detection: ECL Basic Kit (RM00020).

Exposure time: 90s.



Western blot analysis of lysates from 293T cells using Phospho-eIF4EBP1-S65 Rabbit mAb (AP1363) at 1:12000 dilution incubated at room temperature for 1.5 hours. 293T cells were treated with insulin (100 ng/ml) at 37°C for 40 minutes after serum-starvation overnight.

Secondary antibody: HRP-conjugated Goat anti-Rabbit IgG (H+L) (AS014) at 1:10000 dilution.

Lysates/proteins: 30 µg per lane.

Blocking buffer: 3 % nonfat dry milk in TBST.

Detection: ECL Basic Kit (RM00020).

Exposure time: 90s.