

Phospho-Rpb1 CTD-S2/S5 Rabbit mAb

Catalog No.: AP1354 **Recombinant**

Basic Information

Observed MW

270kDa

Calculated MW

217kDa

Category

Primary antibody

Applications

WB,IP,ChIP,CUT&Tag,ELISA

Cross-Reactivity

Human

CloneNo number

ARC54959

Background

This gene encodes the largest subunit of RNA polymerase II, the polymerase responsible for synthesizing messenger RNA in eukaryotes. The product of this gene contains a carboxy terminal domain composed of heptapeptide repeats that are essential for polymerase activity. These repeats contain serine and threonine residues that are phosphorylated in actively transcribing RNA polymerase. In addition, this subunit, in combination with several other polymerase subunits, forms the DNA binding domain of the polymerase, a groove in which the DNA template is transcribed into RNA.

Recommended Dilutions

WB 1:1000 - 1:5000

IP 0.5µg-4µg antibody for
200µg-400µg extracts of
whole cells

ChIP 5µg antibody for
10µg-15µg of Chromatin

CUT&Tag 10⁵ cells /1 µg

ELISA Recommended starting
concentration is 1 µg/mL.
Please optimize the
concentration based on
your specific assay
requirements.

Contact

☎ | 400-999-6126

✉ | cn.market@abclonal.com.cn

Immunogen Information

Gene ID

5430

Swiss Prot

P24928

Immunogen

Synthetic peptide. This information is considered to be commercially sensitive.

Synonyms

RPB1; RPO2; POLR2; POLRA; RPBh1; RPOL2; NEDHIB; RplILS; hsRPB1; hRPB220; Phospho-POLR2A-S2/S5

Product Information

Source

Rabbit

Isotype

IgG

Purification

Affinity purification

Storage

Store at -20°C. Avoid freeze / thaw cycles.

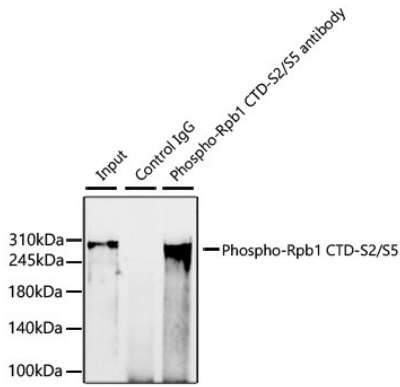
Buffer: PBS with 0.09% Sodium azide,0.05% BSA,50% glycerol,pH7.3.



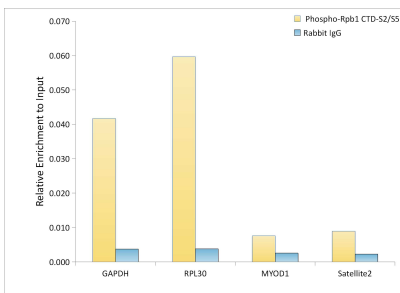
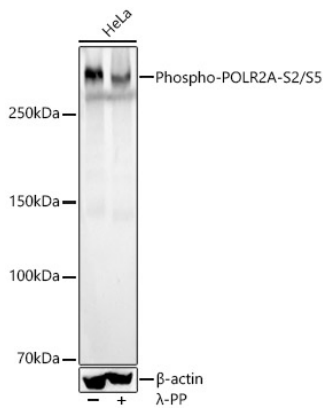
| www.abclonal.com.cn

Validation Data

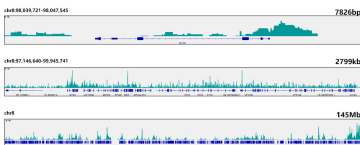
Immunoprecipitation analysis of 300 µg extracts of HeLa cells using 3 µg Phospho-Rpb1 CTD-S2/S5 Rabbit mAb (AP1354). Western blot was performed from the immunoprecipitate using Phospho-Rpb1 CTD-S2/S5 Rabbit mAb antibody (AP1354) at a dilution of 1:2000.



Western blot analysis of various lysates, using Phospho-POLR2A-S2/S5 Rabbit mAb (AP1354) at 1:2000 dilution. HeLa cells were treated by λ-PP mixed solution (1ul) at 30°C for 30 minutes. Secondary antibody: HRP-conjugated Goat anti-Rabbit IgG (H+L) (AS014) at 1:10000 dilution. Lysates/proteins: 25µg per lane. Blocking buffer: 3% nonfat dry milk in TBST. Detection: ECL Basic Kit (RM00020). Exposure time: 4s.



Chromatin immunoprecipitation analysis of extracts of HeLa cells, using Phospho-POLR2A-S2/S5 Rabbit mAb (AP1354) and rabbit IgG. The amount of immunoprecipitated DNA was checked by quantitative PCR. Histogram was constructed by the ratios of the immunoprecipitated DNA to the input.



Validation Data

CUT&Tag was performed using the CUT&Tag Assay Kit (pAG-Tn5) for Illumina(RK20265) from 10^8 K562 cells with 1 μ g Phospho-Rpb1 CTD-S2/S5 Rabbit mAb (AP1354), along with a Goat Anti-Rabbit IgG(H+L). The CUT&Tag results indicate the enrichment pattern of Phospho-POLR2A-S2/S5 in representative gene loci (RPL30), as shown in figure.