

# Phospho-MDM2-S166 Rabbit mAb

Catalog No.: AP1308 **Recombinant**

## Basic Information

### Observed MW

Refer to figures

### Calculated MW

55kDa

### Category

Primary antibody

### Applications

IHC-P, ELISA

### Cross-Reactivity

Human, Mouse, Rat

### CloneNo number

ARC2909

## Background

This gene encodes a nuclear-localized E3 ubiquitin ligase. The encoded protein can promote tumor formation by targeting tumor suppressor proteins, such as p53, for proteasomal degradation. This gene is itself transcriptionally-regulated by p53. Overexpression or amplification of this locus is detected in a variety of different cancers. There is a pseudogene for this gene on chromosome 2. Alternative splicing results in a multitude of transcript variants, many of which may be expressed only in tumor cells.

## Recommended Dilutions

### IHC-P

1:20 - 1:200 | ELISA  
Recommended starting  
concentration is 1 µg/mL.  
Please optimize the  
concentration based on  
your specific assay  
requirements.

## Immunogen Information

### Gene ID

4193

### Swiss Prot

Q00987

### Immunogen

Synthetic peptide. This information is considered to be commercially sensitive.

### Synonyms

HDMX; LSKB; hdm2; ACTFS; Phospho-MDM2-S166

## Contact

☎ | 400-999-6126

✉ | [cn.market@abclonal.com.cn](mailto:cn.market@abclonal.com.cn)

🌐 | [www.abclonal.com.cn](http://www.abclonal.com.cn)

## Product Information

### Source

Rabbit

### Isotype

IgG

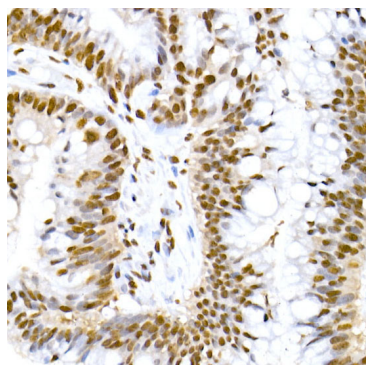
### Purification

Affinity purification

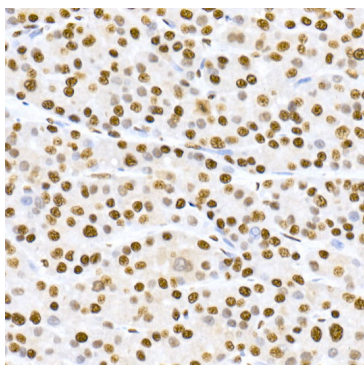
### Storage

Store at -20°C. Avoid freeze / thaw cycles.

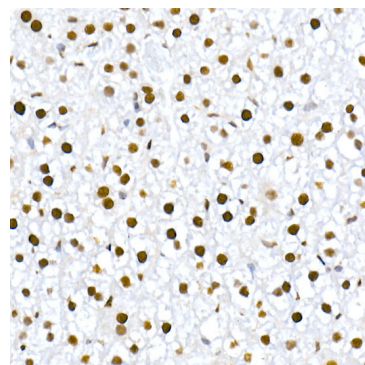
Buffer: PBS with 0.02% sodium azide, 0.05% BSA, 50% glycerol, pH7.3.



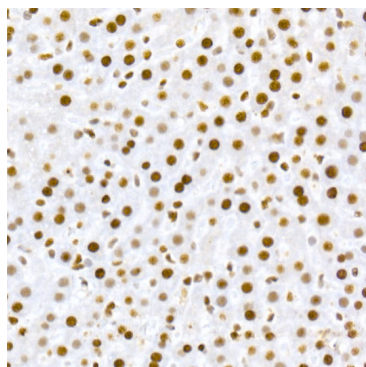
Immunohistochemistry analysis of paraffin-embedded Human colon carcinoma using Phospho-MDM2-S166 Rabbit mAb (AP1308) at dilution of 1:20 (40x lens). High pressure antigen retrieval performed with 0.01M Citrate buffer (pH 6.0) prior to IHC staining.



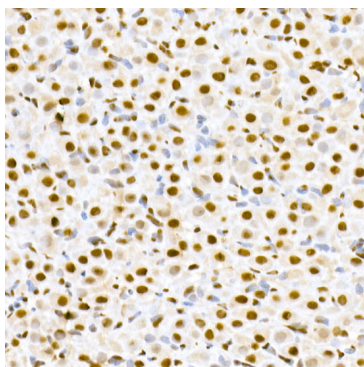
Immunohistochemistry analysis of paraffin-embedded Human liver cancer using Phospho-MDM2-S166 Rabbit mAb (AP1308) at dilution of 1:20 (40x lens). High pressure antigen retrieval performed with 0.01M Citrate buffer (pH 6.0) prior to IHC staining.



Immunohistochemistry analysis of paraffin-embedded Mouse liver using Phospho-MDM2-S166 Rabbit mAb (AP1308) at dilution of 1:20 (40x lens). High pressure antigen retrieval performed with 0.01M Citrate buffer (pH 6.0) prior to IHC staining.



Immunohistochemistry analysis of paraffin-embedded Rat liver using Phospho-MDM2-S166 Rabbit mAb (AP1308) at dilution of 1:20 (40x lens). High pressure antigen retrieval performed with 0.01M Citrate buffer (pH 6.0) prior to IHC staining.



Immunohistochemistry analysis of paraffin-embedded Rat ovary using Phospho-MDM2-S166 Rabbit mAb (AP1308) at dilution of 1:20 (40x lens). High pressure antigen retrieval performed with 0.01M Citrate buffer (pH 6.0) prior to IHC staining.