

Phospho-MAPK14-T180/Y182+MAPK11-T180/Y182+MAPK13-T180/Y182+MAPK12-T183/Y1845 Rabbit pAb

Catalog No.: AP1256

Basic Information

Observed MW

43kDa

Calculated MW**Category**

Primary antibody

Applications

WB, ELISA

Cross-Reactivity

Human, Rat

Background

p38 MAP kinase (MAPK), also called RK or CSBP, is the mammalian orthologue of the yeast HOG kinase that participates in a signaling cascade controlling cellular responses to cytokines and stress. Four isoforms of p38 MAPK, p38 α , β , γ (also known as Erk6 or SAPK3), and δ (also known as SAPK4) have been identified. Similar to the SAPK/JNK pathway, p38 MAPK is activated by a variety of cellular stresses, including osmotic shock, inflammatory cytokines, lipopolysaccharide (LPS), UV light, and growth factors. MKK3, MKK6, and SEK activate p38 MAPK by phosphorylation at Thr180 and Tyr182. Activated p38 MAPK has been shown to phosphorylate and activate MAPKAP kinase 2 and to phosphorylate the transcription factors ATF-2, Max, and MEF2. SB203580 (4-(4-fluorophenyl)-2-(4-methylsulfinylphenyl)-5-(4-pyridyl)-imidazole) is a selective inhibitor of p38 MAPK. This compound inhibits the activation of MAPKAP-2 by p38 MAPK and subsequent phosphorylation of HSP27. SB203580 inhibits p38 MAPK catalytic activity by binding to the ATP-binding pocket, but does not inhibit phosphorylation of p38 MAPK by upstream kinases.

Recommended Dilutions

WB 1:100 - 1:500**ELISA** Recommended starting concentration is 1 μ g/mL. Please optimize the concentration based on your specific assay requirements.

Immunogen Information

Gene ID

5600/6300/5603/1432

Swiss Prot

Q15759/P53778/O15264/Q16539

Immunogen

Synthetic peptide. This information is considered to be commercially sensitive.

Synonyms

Contact

 | 400-999-6126 | cn.market@abclonal.com.cn | www.abclonal.com.cn

Product Information

Source

Rabbit

Isotype

IgG

Purification

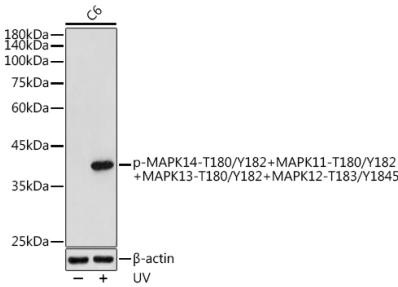
Affinity purification

Storage

Store at -20°C. Avoid freeze / thaw cycles.

Buffer: PBS containing 50% glycerol, preserved with proclin300 or sodium azide (as specified on the Certificate of Analysis), pH 7.3.

Validation Data



Western blot analysis of lysates from C6 cells, using Phospho-MAPK14-T180/Y182+MAPK11-T180/Y182+MAPK13-T180/Y182+MAPK12-T183/Y1845 Rabbit pAb (AP1256) at 1:500 dilution. C6 cells were treated with UV at room temperature for 15-30 minutes.
Secondary antibody: HRP-conjugated Goat anti-Rabbit IgG (H+L) (AS014) at 1:10000 dilution.
Lysates/proteins: 25µg per lane.
Blocking buffer: 3% nonfat dry milk in TBST.
Detection: ECL Enhanced Kit (RM00021).
Exposure time: 180s.