

Phospho-alt-RPL36-S140 Rabbit pAb

Catalog No.: AP1211 **1 Publications**

Basic Information

Observed MW

Refer to figures

Calculated MW

Category

Primary antibody

Applications

WB,DB,ELISA

Cross-Reactivity

Human

Background

The gene encoding RPL36 is located on position 19p13.2 at the short arm of human chromosome 19 and consists of 104 amino acids with a molecular weight of 12128 daltons. RPL36 may be involved in the early stage of hepatocarcinogenesis, and it can be used as an independent and potential prognostic marker for resected HCC.

Recommended Dilutions

WB 1:500 - 1:2000

DB 1:500 - 1:1000

ELISA Recommended starting concentration is 1 µg/mL. Please optimize the concentration based on your specific assay requirements.

Immunogen Information

Gene ID

Swiss Prot

Immunogen

Synthetic peptide. This information is considered to be commercially sensitive.

Synonyms

Contact

☎ | 400-999-6126

✉ | cn.market@abclonal.com.cn

🌐 | www.abclonal.com.cn

Product Information

Source

Rabbit

Isotype

IgG

Purification

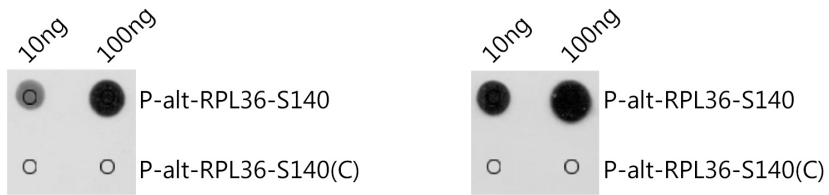
Affinity purification

Storage

Store at -20°C. Avoid freeze / thaw cycles.

Buffer: PBS with 0.01% thimerosal, 50% glycerol, pH7.3.

Validation Data



Dot-blot analysis of all sorts of peptides using Phospho-alt-RPL36-S140 antibody (AP1211) at 1:1000 dilution. Exposure time: 1s.

Dot-blot analysis of all sorts of peptides using Phospho-alt-RPL36-S140 antibody (AP1211) at 1:1000 dilution. Exposure time: 30s.