

# Phospho-alt-RPL36-S19 Rabbit pAb

Catalog No.: AP1209

## Basic Information

### Observed MW

Refer to figures

### Calculated MW

### Category

Primary antibody

### Applications

WB,DB,ELISA

### Cross-Reactivity

Human

## Background

Alt-RPL36 is a protein co-encoded with human RPL36. Alt-RPL36 partially localizes to the endoplasmic reticulum, where it interacts with TMEM24, which transports the phosphatidylinositol 4,5-bisphosphate (PI(4,5)P<sub>2</sub>) precursor phosphatidylinositol from the endoplasmic reticulum to the plasma membrane. Alt-RPL36 contains four phosphoserine residues, point mutations of which abolish interaction with TMEM24 and, consequently, alt-RPL36 effects on PI3K signaling and cell size.

## Recommended Dilutions

**WB** 1:500 - 1:2000

**DB** 1:500 - 1:1000

**ELISA** Recommended starting concentration is 1 µg/mL. Please optimize the concentration based on your specific assay requirements.

## Immunogen Information

### Gene ID

### Swiss Prot

### Immunogen

Synthetic peptide. This information is considered to be commercially sensitive.

### Synonyms

## Contact

☎ | 400-999-6126

✉ | [cn.market@abclonal.com.cn](mailto:cn.market@abclonal.com.cn)

🌐 | [www.abclonal.com.cn](http://www.abclonal.com.cn)

## Product Information

### Source

Rabbit

### Isotype

IgG

### Purification

Affinity purification

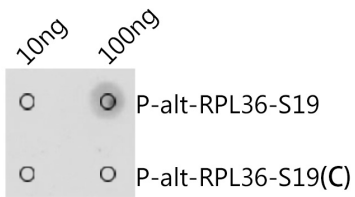
### Storage

Store at -20°C. Avoid freeze / thaw cycles.

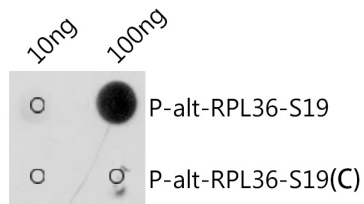
Buffer: PBS with 0.01% thimerosal, 50% glycerol, pH7.3.

## Validation Data

---



Dot-blot analysis of all sorts of peptides using Phospho-alt-RPL36-S19 antibody (AP1209) at 1:1000 dilution. Exposure time: 1s.



Dot-blot analysis of all sorts of peptides using Phospho-alt-RPL36-S19 antibody (AP1209) at 1:1000 dilution. Exposure time: 30s.