

Phospho-STING/TMEM173-S365 Rabbit pAb

Catalog No.: AP1199 **10 Publications**

Basic Information

Observed MW

41 kDa

Calculated MW

43 kDa

Category

Primary antibody

Applications

WB,IF/ICC,ELISA

Cross-Reactivity

Human, Mouse

Background

Enables 2',3'-cyclic GMP-AMP binding activity; cyclic-di-GMP binding activity; and ubiquitin protein ligase binding activity. Involved in several processes, including defense response to other organism; macroautophagy; and positive regulation of interferon-beta production. Acts upstream of or within cellular response to interferon-beta; positive regulation of transcription by RNA polymerase II; and regulation of inflammatory response. Located in several cellular components, including autophagosome; perinuclear region of cytoplasm; and peroxisome. Is expressed in ductus deferens; epididymis; ileum; and prostate gland. Human ortholog(s) of this gene implicated in STING-associated vasculopathy with onset in infancy. Orthologous to human STING1 (stimulator of interferon response cGAMP interactor 1).

Recommended Dilutions

WB 1:500 - 1:5000

IF/ICC 1:1000 - 1:4000

ELISA Recommended starting concentration is 1 µg/mL. Please optimize the concentration based on your specific assay requirements.

Immunogen Information

Gene ID

72512

Swiss Prot

Q3TBT3

Immunogen

Synthetic peptide. This information is considered to be commercially sensitive.

Synonyms

ERIS; MPYS; Mita; STING; Tmem173; STING-beta; 2610307O08Rik; Phospho-STING-S365

Contact

☎ | 400-999-6126

✉ | cn.market@abclonal.com.cn

🌐 | www.abclonal.com.cn

Product Information

Source

Rabbit

Isotype

IgG

Purification

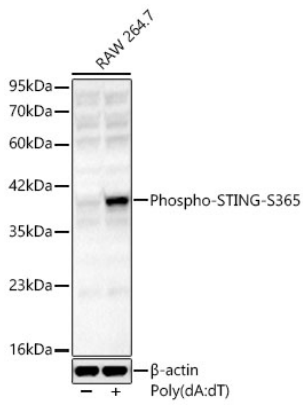
Affinity purification

Storage

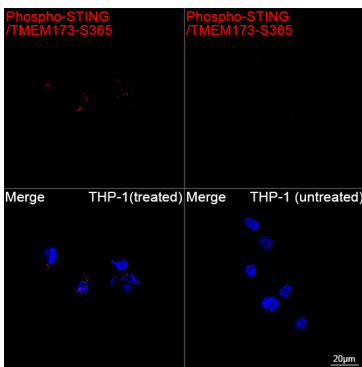
Store at -20°C. Avoid freeze / thaw cycles.

Buffer: PBS, pH 7.3, containing 50% glycerol. Preserved with Proclin300 or sodium azide. May contain 0.05% BSA as specified on the Certificate of Analysis.

Validation Data



Western blot analysis of lysates from RAW 264.7 cells using Phospho-STING-S365 Rabbit pAb (AP1199) at 1:1000 dilution. RAW264.7 cells were transfected with poly(dA:dT) (5 μ g/mL) for 3 hours. Secondary antibody: HRP-conjugated Goat anti-Rabbit IgG (H+L) (AS014) at 1:10000 dilution. Lysates/proteins: 25 μ g per lane. Blocking buffer: 3% nonfat dry milk in TBST. Detection: ECL Basic Kit (RM00020). Exposure time: 180s.



Confocal imaging of THP-1 cells (treated with PMA and poly(dA:dT)) and THP-1 cells (untreated) using Phospho-STING/TMEM173-S365 Rabbit pAb (AP1199, dilution 1:1600) followed by a further incubation with Cy3-conjugated Goat anti-Rabbit IgG (H+L) (AS007, dilution 1:500) (Red). DAPI was used for nuclear staining (Blue). Objective: 100x.