

Phospho-AMPKa1/AMPKa2-T183/T172 Rabbit pAb

Catalog No.: AP1171

8 Publications

Basic Information

Observed MW

62kDa

Calculated MW

64kDa/65kDa/62kDa

Category

Primary antibody

Applications

WB, ELISA

Cross-Reactivity

Human, Mouse, Rat

Background

The protein encoded by this gene belongs to the ser/thr protein kinase family. It is the catalytic subunit of the 5'-prime-AMP-activated protein kinase (AMPK). AMPK is a cellular energy sensor conserved in all eukaryotic cells. The kinase activity of AMPK is activated by the stimuli that increase the cellular AMP/ATP ratio. AMPK regulates the activities of a number of key metabolic enzymes through phosphorylation. It protects cells from stresses that cause ATP depletion by switching off ATP-consuming biosynthetic pathways. Alternatively spliced transcript variants encoding distinct isoforms have been observed.

Recommended Dilutions

WB 1:500 - 1:2000

ELISA Recommended starting concentration is 1 µg/mL. Please optimize the concentration based on your specific assay requirements.

Immunogen Information

Gene ID

5562/5563

Swiss Prot

Q13131/P54646

Immunogen

Synthetic peptide. This information is considered to be commercially sensitive.

Synonyms

AMPKa1/AMPKa2; Phospho-AMPKa1/AMPKa2-T183/T172

Contact

☎ | 400-999-6126

✉ | cn.market@abclonal.com.cn

🌐 | www.abclonal.com.cn

Product Information

Source

Rabbit

Isotype

IgG

Purification

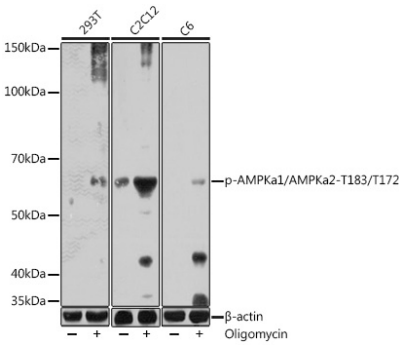
Affinity purification

Storage

Store at -20°C. Avoid freeze / thaw cycles.

Buffer: PBS with 0.01% thimerosal, 50% glycerol, pH7.3.

Validation Data



Western blot analysis of various lysates using Phospho-AMPKα1/AMPKα2-T183/T172 Rabbit pAb (AP1171) at 1:1000 dilution. 293T cells were treated with oligomycin (0. 5 uM) at 37°C for 30 minutes. C2C12 cells were treated with oligomycin (0. 5 uM) at 37°C for 30 minutes. C6 cells were treated with oligomycin (0. 5 uM) at 37°C for 30 minutes after serum-starvation overnight. Secondary antibody: HRP-conjugated Goat anti-Rabbit IgG (H+L) (AS014) at 1:10000 dilution. Lysates/proteins: 25µg per lane. Blocking buffer: 3% BSA. Detection: ECL Enhanced Kit (RM00021). Exposure time: 60s.