

# Phospho-RIPK1-S166 Rabbit pAb

Catalog No.: AP1115 **6 Publications**

## Basic Information

### Observed MW

82kDa

### Calculated MW

75kDa

### Category

Primary antibody

### Applications

WB, ELISA

### Cross-Reactivity

Human, Mouse

## Background

Enables protein homodimerization activity and protein serine/threonine kinase activity. Involved in several processes, including necroptotic signaling pathway; negative regulation of cardiac muscle cell proliferation; and regulation of signal transduction. Acts upstream of or within several processes, including positive regulation of I-kappaB kinase/NF-kappaB signaling; regulation of extrinsic apoptotic signaling pathway; and ripoptosome assembly involved in necroptotic process. Predicted to be located in several cellular components, including cytosol; membrane raft; and mitochondrion. Predicted to be part of death-inducing signaling complex; receptor complex; and ripoptosome. Is expressed in several structures, including central nervous system; heart; liver; lung; and tail. Human ortholog(s) of this gene implicated in immunodeficiency 57. Orthologous to human RIPK1 (receptor interacting serine/threonine kinase 1).

## Recommended Dilutions

**WB** 1:500 - 1:2000

**ELISA** Recommended starting concentration is 1 µg/mL. Please optimize the concentration based on your specific assay requirements.

## Immunogen Information

### Gene ID

19766

### Swiss Prot

Q60855

### Immunogen

Synthetic peptide. This information is considered to be commercially sensitive.

### Synonyms

RIP; Rinp; Rip1; RIP-1; D330015H01Rik; Phospho-RIPK1-S166

## Contact

☎ | 400-999-6126

✉ | [cn.market@abclonal.com.cn](mailto:cn.market@abclonal.com.cn)

🌐 | [www.abclonal.com.cn](http://www.abclonal.com.cn)

## Product Information

### Source

Rabbit

### Isotype

IgG

### Purification

Affinity purification

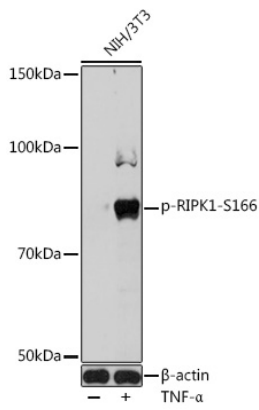
### Storage

Store at -20°C. Avoid freeze / thaw cycles.

Buffer: PBS containing 50% glycerol, preserved with proclin300 or sodium azide (as specified on the Certificate of Analysis), pH 7.3.

## Validation Data

---



Western blot analysis of lysates from NIH/3T3 cells, using Phospho-RIPK1-S166 Rabbit pAb (AP1115) at 1:1000 dilution. NIH/3T3 cells were treated by TNF- $\alpha$  (20 ng/mL) at 37°C for 30 minutes.  
Secondary antibody: HRP-conjugated Goat anti-Rabbit IgG (H+L) (AS014) at 1:10000 dilution.  
Lysates/proteins: 25 $\mu$ g per lane.  
Blocking buffer: 3% BSA.  
Detection: ECL Basic Kit (RM00020).  
Exposure time: 60s.