

# Phospho-GSK3β-S9 Rabbit mAb

Catalog No.: AP1088

Recombinant

20 Publications

## Basic Information

### Observed MW

47 kDa

### Calculated MW

47 kDa

### Category

Primary antibody

### Applications

WB, IHC-P, ELISA

### Cross-Reactivity

Human

### CloneNo number

ARC0069

## Background

The protein encoded by this gene is a serine-threonine kinase belonging to the glycogen synthase kinase subfamily. It is a negative regulator of glucose homeostasis and is involved in energy metabolism, inflammation, ER-stress, mitochondrial dysfunction, and apoptotic pathways. Defects in this gene have been associated with Parkinson disease and Alzheimer disease.

## Recommended Dilutions

**WB** 1:2000 - 1:15000

**IHC-P** 1:200 - 1:600

**ELISA** Recommended starting concentration is 1 µg/mL. Please optimize the concentration based on your specific assay requirements.

## Immunogen Information

### Gene ID

2932

### Swiss Prot

P49841

### Immunogen

Synthetic peptide. This information is considered to be commercially sensitive.

### Synonyms

GSK3B; gsk-3β; Phospho-GSK3β-S9

## Contact

☎ | 400-999-6126

✉ | [cn.market@abclonal.com.cn](mailto:cn.market@abclonal.com.cn)

🌐 | [www.abclonal.com.cn](http://www.abclonal.com.cn)

## Product Information

### Source

Rabbit

### Isotype

IgG

### Purification

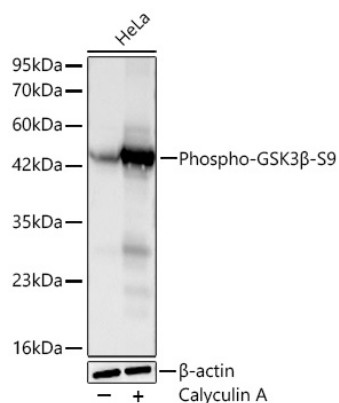
Affinity purification

### Storage

Store at -20°C. Avoid freeze / thaw cycles.

Buffer: PBS containing 50% glycerol and 0.05% BSA, preserved with proclin300 or sodium azide (as specified on the Certificate of Analysis), pH 7.3.

## Validation Data



Western blot analysis of lysates from HeLa cells using Phospho-GSK3 $\beta$ -S9 Rabbit mAb (AP1088) at 1:3000 dilution incubated at room temperature for 1.5 hours. HeLa cells were treated with Calyculin A (100 nM) at 37°C for 30 minutes after serum-starvation overnight.

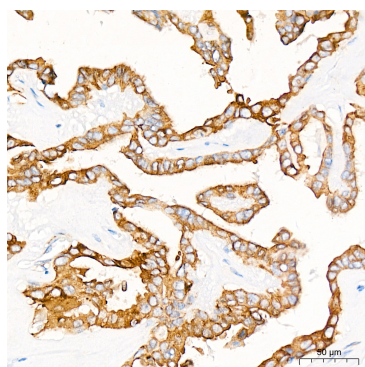
Secondary antibody: HRP-conjugated Goat anti-Rabbit IgG (H+L) (AS014) at 1:10000 dilution.

Lysates/proteins: 30  $\mu$ g per lane.

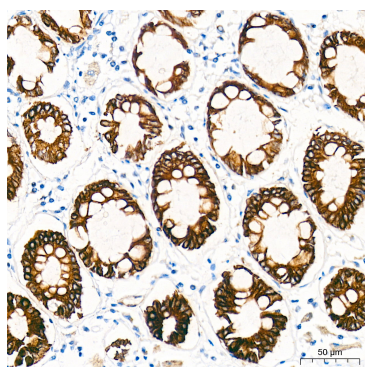
Blocking buffer: 3% nonfat dry milk in TBST.

Detection: ECL Basic Kit (RM00020).

Exposure time: 20s.



Immunohistochemistry analysis of paraffin-embedded Human thyroid cancer tissue using Phospho-GSK3 $\beta$ -S9 Rabbit mAb (AP1088) at a dilution of 1:200 (40x lens). High pressure antigen retrieval performed with 0.01M Citrate Buffer (pH 6.0) prior to IHC staining.



Immunohistochemistry analysis of paraffin-embedded Human colon tissue using Phospho-GSK3 $\beta$ -S9 Rabbit mAb (AP1088) at a dilution of 1:200 (40x lens). High pressure antigen retrieval performed with 0.01M Citrate Buffer (pH 6.0) prior to IHC staining.