

Phospho-INSR-Y1189/Y1190 + IGF1R-Y1165/Y1166 Rabbit pAb

Catalog No.: AP1086 **2 Publications**

Basic Information

Observed MW

100kDa

Calculated MW

154kDa/155kDa/156kDa

Category

Primary antibody

Applications

WB,ELISA

Cross-Reactivity

Human, Mouse, Rat

Background

This receptor binds insulin-like growth factor with a high affinity. It has tyrosine kinase activity. The insulin-like growth factor I receptor plays a critical role in transformation events. Cleavage of the precursor generates alpha and beta subunits. It is highly overexpressed in most malignant tissues where it functions as an anti-apoptotic agent by enhancing cell survival. Alternatively spliced transcript variants encoding distinct isoforms have been found for this gene. [provided by RefSeq, May 2014]

Recommended Dilutions

WB 1:500 - 1:2000

ELISA Recommended starting concentration is 1 µg/mL. Please optimize the concentration based on your specific assay requirements.

Immunogen Information

Gene ID

3480/3643

Swiss Prot

P08069/P06213

Immunogen

Synthetic peptide. This information is considered to be commercially sensitive.

Synonyms

IGF1R/INSR; Phospho-INSR-Y1189/Y1190 + IGF1R-Y1165/Y1166

Contact

 | 400-999-6126

 | cn.market@abclonal.com.cn

 | www.abclonal.com.cn

Product Information

Source

Rabbit

Isotype

IgG

Purification

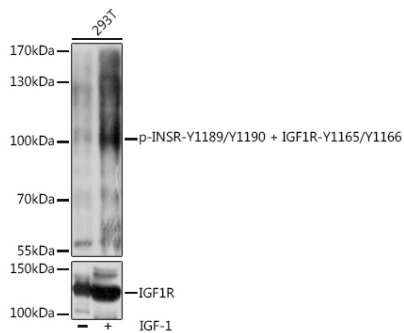
Affinity purification

Storage

Store at -20°C. Avoid freeze / thaw cycles.

Buffer: PBS with 0.01% thimerosal, 50% glycerol, pH 7.3.

Validation Data



Western blot analysis of lysates from 293T cells, using Phospho-INSR-Y1189/Y1190 + IGF1R-Y1165/Y1166 Rabbit pAb (AP1086) at 1:1000 dilution or IGF1R antibody (A0243). 293T cells were treated with IGF-1 (50 ng/mL) at 37°C for 5 minutes after serum-starvation overnight.
Secondary antibody: HRP-conjugated Goat anti-Rabbit IgG (H+L) (AS014) at 1:10000 dilution.
Lysates/proteins: 25µg per lane.
Blocking buffer: 3% BSA.
Detection: ECL Basic Kit (RM00020).
Exposure time: 1s.