

Phospho- β -Catenin-S29/33/37/T41 Rabbit pAb

Catalog No.: AP1076

2 Publications

Basic Information

Observed MW

92kDa

Calculated MW

85kDa

Category

Primary antibody

Applications

WB, ELISA

Cross-Reactivity

Human, Mouse, Rat

Background

The protein encoded by this gene is part of a complex of proteins that constitute adherens junctions (AJs). AJs are necessary for the creation and maintenance of epithelial cell layers by regulating cell growth and adhesion between cells. The encoded protein also anchors the actin cytoskeleton and may be responsible for transmitting the contact inhibition signal that causes cells to stop dividing once the epithelial sheet is complete. Finally, this protein binds to the product of the APC gene, which is mutated in adenomatous polyposis of the colon. Mutations in this gene are a cause of colorectal cancer (CRC), pilomatixoma (PTR), medulloblastoma (MDB), and ovarian cancer. Alternative splicing results in multiple transcript variants.

Recommended Dilutions

WB 1:100 - 1:500**ELISA** Recommended starting concentration is 1 μ g/mL. Please optimize the concentration based on your specific assay requirements.

Immunogen Information

Gene ID

1499

Swiss Prot

P35222

Immunogen

Synthetic peptide. This information is considered to be commercially sensitive.

SynonymsEVR7; CTNNB; MRD19; NEDSDV; armadillo; Phospho- β -Catenin-S29/33/37/T41

Contact

 | 400-999-6126 | cn.market@abclonal.com.cn | www.abclonal.com.cn

Product Information

Source

Rabbit

Isotype

IgG

Purification

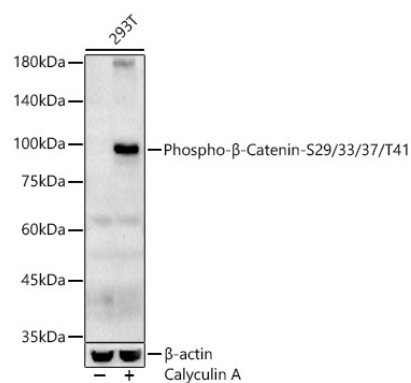
Affinity purification

Storage

Store at -20°C. Avoid freeze / thaw cycles.

Buffer: PBS with 0.05% proclin300, 50% glycerol, pH7.3.

Validation Data



Western blot analysis of various lysates, using Phospho-β-Catenin-S29/33/37/T41 Rabbit pAb (AP1076) at 1:400 dilution. 293T cells were treated with Calyculin A (100 nM) at 37°C for 30 minutes after serum-starvation overnight.

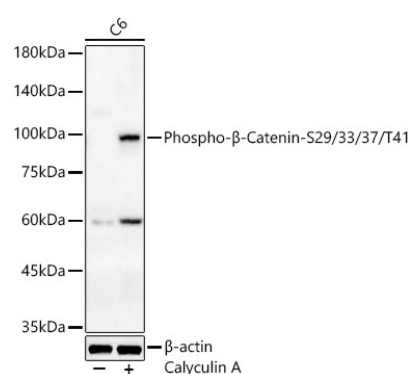
Secondary antibody: HRP-conjugated Goat anti-Rabbit IgG (H+L) (AS014) at 1:10000 dilution.

Lysates/proteins: 25μg per lane.

Blocking buffer: 3% nonfat dry milk in TBST.

Detection: ECL Basic Kit (RM00020).

Exposure time: 90s.



Western blot analysis of lysates from C6 cells, using Phospho-β-Catenin-S29/33/37/T41 Rabbit pAb (AP1076) at 1:400 dilution. C6 cells were treated with Calyculin A (100 nM) at 37°C for 30 minutes after serum-starvation overnight.

Secondary antibody: HRP-conjugated Goat anti-Rabbit IgG (H+L) (AS014) at 1:10000 dilution.

Lysates/proteins: 25μg per lane.

Blocking buffer: 3% nonfat dry milk in TBST.

Detection: ECL Basic Kit (RM00020).

Exposure time: 90s.