

# Phospho-Cyclin D1-T286 Rabbit pAb

Catalog No.: AP1061

1 Publications

## Basic Information

### Observed MW

37kDa

### Calculated MW

34kDa

### Category

Primary antibody

### Applications

ELISA, WB, IHC-P

### Cross-Reactivity

Human, Mouse, Rat

## Background

The protein encoded by this gene belongs to the highly conserved cyclin family, whose members are characterized by a dramatic periodicity in protein abundance throughout the cell cycle. Cyclins function as regulators of CDK kinases. Different cyclins exhibit distinct expression and degradation patterns which contribute to the temporal coordination of each mitotic event. This cyclin forms a complex with and functions as a regulatory subunit of CDK4 or CDK6, whose activity is required for cell cycle G1/S transition. This protein has been shown to interact with tumor suppressor protein Rb and the expression of this gene is regulated positively by Rb. Mutations, amplification and overexpression of this gene, which alters cell cycle progression, are observed frequently in a variety of human cancers.

## Recommended Dilutions

WB 1:500 - 1:2000

IHC-P 1:50 - 1:200

## Immunogen Information

### Gene ID

595

### Swiss Prot

P24385

### Immunogen

A synthetic phosphorylated peptide around T286 of human Cyclin D1 (NP\_444284.1).

### Synonyms

BCL1; PRAD1; U21B31; D11S287E; Phospho-Cyclin D1-T286

## Contact

 | 400-999-6126 | [cn.market@abclonal.com.cn](mailto:cn.market@abclonal.com.cn) | [www.abclonal.com.cn](http://www.abclonal.com.cn)

## Product Information

### Source

Rabbit

### Isotype

IgG

### Purification

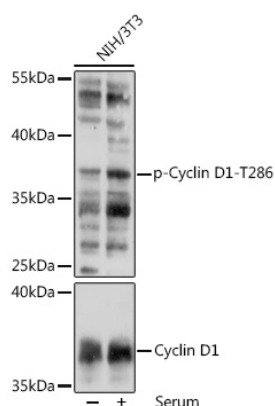
Affinity purification

### Storage

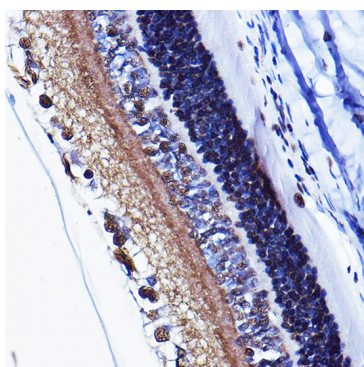
Store at -20°C. Avoid freeze / thaw cycles.

Buffer: PBS with 0.01% thimerosal, 50% glycerol, pH7.3.

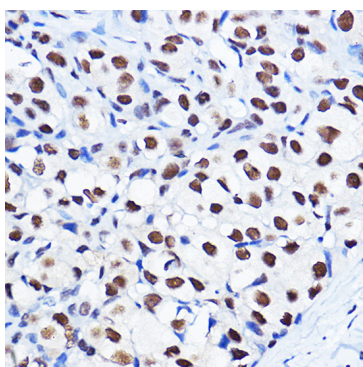
## Validation Data



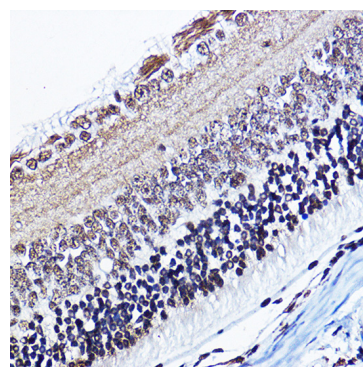
Western blot analysis of lysates from NIH/3T3 cells, using Phospho-Cyclin D1-T286 pAb (AP1061) at 1:1000 dilution or Cyclin D1 antibody (A11310). NIH/3T3 cells were treated by 10% FBS at 37°C for 30 minutes after serum-starvation overnight.  
 Secondary antibody: HRP Goat Anti-Rabbit IgG (H+L) (AS014) at 1:10000 dilution.  
 Lysates/proteins: 25µg per lane.  
 Blocking buffer: 3% BSA.  
 Detection: ECL Basic Kit (RM00020).  
 Exposure time: 60s.



Immunohistochemistry analysis of Phospho-Cyclin D1-T286 in paraffin-embedded rat eye using Phospho-Cyclin D1-T286 Rabbit pAb (AP1061) at dilution of 1:100 (40x lens). Perform high pressure antigen retrieval with 10 mM citrate buffer pH 6.0 before commencing with IHC staining protocol.



Immunohistochemistry analysis of Phospho-Cyclin D1-T286 in paraffin-embedded human breast cancer using Phospho-Cyclin D1-T286 Rabbit pAb (AP1061) at dilution of 1:100 (40x lens). Perform high pressure antigen retrieval with 10 mM citrate buffer pH 6.0 before commencing with IHC staining protocol.



Immunohistochemistry analysis of Phospho-Cyclin D1-T286 in paraffin-embedded mouse eye using Phospho-Cyclin D1-T286 Rabbit pAb (AP1061) at dilution of 1:100 (40x lens). Perform high pressure antigen retrieval with 10 mM citrate buffer pH 6.0 before commencing with IHC staining protocol.