

Phospho-PAK4/PAK5/PAK6-S474/S560/S602 Rabbit mAb

Catalog No.: AP1049 **Recombinant**

Basic Information

Observed MW

64kDa,75kDa,70kDa

Calculated MW

64, 80, 75 kDa

Category

Primary antibody

Applications

WB,ELISA

Cross-Reactivity

Mouse, Rat

CloneNo number

ARC1596

Background

PAK proteins, a family of serine/threonine p21-activating kinases, include PAK1, PAK2, PAK3 and PAK4. PAK proteins are critical effectors that link Rho GTPases to cytoskeleton reorganization and nuclear signaling. They serve as targets for the small GTP binding proteins Cdc42 and Rac and have been implicated in a wide range of biological activities. PAK4 interacts specifically with the GTP-bound form of Cdc42Hs and weakly activates the JNK family of MAP kinases. PAK4 is a mediator of filopodia formation and may play a role in the reorganization of the actin cytoskeleton. Multiple alternatively spliced transcript variants encoding distinct isoforms have been found for this gene. [provided by RefSeq, Jul 2008]

Recommended Dilutions

WB 1:500 - 1:1000**ELISA** Recommended starting concentration is 1 µg/mL. Please optimize the concentration based on your specific assay requirements.

Immunogen Information

Gene ID

10298/57144/56924

Swiss Prot

O96013(PAK4-Antigen),Q9P286(PAK5),Q9NQ55(PAK6)

Immunogen

Synthetic peptide. This information is considered to be commercially sensitive.

Synonyms

PAK4; KIAA1142; PAK5KIAA1264; PAK6; Phospho-PAK4/PAK5/PAK6-S474/S560/S602

Contact

 | 400-999-6126 | cn.market@abclonal.com.cn | www.abclonal.com.cn

Product Information

Source

Rabbit

Isotype

IgG

Purification

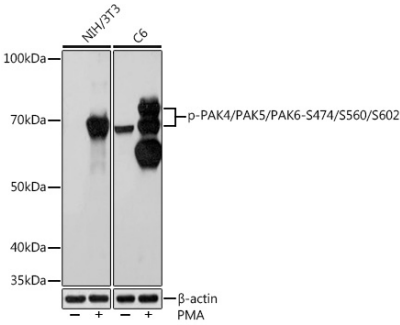
Affinity purification

Storage

Store at -20°C. Avoid freeze / thaw cycles.

Buffer: PBS with 0.02% sodium azide,0.05% BSA,50% glycerol,pH7.3.

Validation Data



Western blot analysis of various lysates using Phospho-PAK4/PAK5/PAK6-S474/S560/S602 Rabbit mAb (AP1049) at 1:1000 dilution. Both NIH/3T3 cells and C6 cells were treated with PMA/TPA (200 nM) at 37°C for 30 minutes after serum-starvation overnight. Secondary antibody: HRP-conjugated Goat anti-Rabbit IgG (H+L) (AS014) at 1:10000 dilution. Lysates/proteins: 25µg per lane. Blocking buffer: 3% BSA. Detection: ECL Basic Kit (RM00020). Exposure time: 10s.