

# Phospho-HSP27/HSPB1-S82 Rabbit mAb

Catalog No.: AP1031

Recombinant

1 Publications

## Basic Information

**Observed MW**

27kDa

**Calculated MW**

23kDa

**Category**

Primary antibody

**Applications**

ELISA, WB

**Cross-Reactivity**

Human, Rat

**CloneNo number**

ARC1576

## Background

This gene encodes a member of the small heat shock protein (HSP20) family of proteins. In response to environmental stress, the encoded protein translocates from the cytoplasm to the nucleus and functions as a molecular chaperone that promotes the correct folding of other proteins. This protein plays an important role in the differentiation of a wide variety of cell types. Expression of this gene is correlated with poor clinical outcome in multiple human cancers, and the encoded protein may promote cancer cell proliferation and metastasis, while protecting cancer cells from apoptosis. Mutations in this gene have been identified in human patients with Charcot-Marie-Tooth disease and distal hereditary motor neuropathy.

## Recommended Dilutions

WB 1:500 - 1:2000

## Immunogen Information

**Gene ID**

3315

**Swiss Prot**

P04792

**Immunogen**

A synthetic phosphorylated peptide around S82 of human HSP27/HSPB1 (P04792).

**Synonyms**

CMT2F; HMN2B; HSP27; HSP28; Hsp25; SRP27; HS.76067; HEL-S-102; Phospho-HSP27/HSPB1-S82

## Contact

 | 400-999-6126 | [cn.market@abclonal.com.cn](mailto:cn.market@abclonal.com.cn) | [www.abclonal.com.cn](http://www.abclonal.com.cn)

## Product Information

**Source**

Rabbit

**Isotype**

IgG

**Purification**

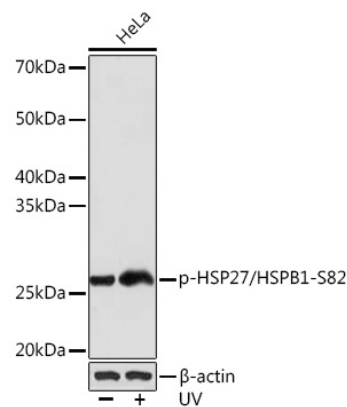
Affinity purification

**Storage**

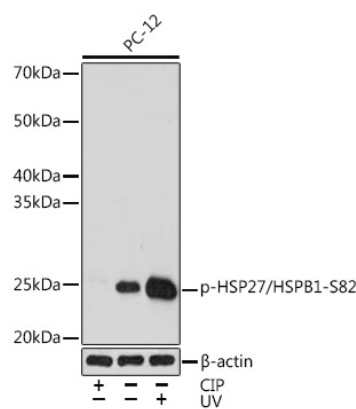
Store at -20°C. Avoid freeze / thaw cycles.

Buffer: PBS with 0.02% sodium azide, 0.05% BSA, 50% glycerol, pH 7.3.

Validation Data



Western blot analysis of extracts of HeLa cells, using Phospho-HSP27/HSPB1-S82 Rabbit mAb (AP1031) at 1:1000 dilution. HeLa cells were treated by UV at room temperature for 15-30 minutes.  
Secondary antibody: HRP Goat Anti-Rabbit IgG (H+L) (AS014) at 1:10000 dilution.  
Lysates/proteins: 25µg per lane.  
Blocking buffer: 3% BSA.  
Detection: ECL Basic Kit (RM00020).  
Exposure time: 3s.



Western blot analysis of extracts of PC-12 cells, using Phospho-HSP27/HSPB1-S82 Rabbit mAb (AP1031) at 1:1000 dilution. PC-12 cells were treated by CIP (20uL/400ul) at 37°C for 1 hour or treated by UV at room temperature for 15-30 minutes.  
Secondary antibody: HRP Goat Anti-Rabbit IgG (H+L) (AS014) at 1:10000 dilution.  
Lysates/proteins: 25µg per lane.  
Blocking buffer: 3% BSA.  
Detection: ECL Basic Kit (RM00020).  
Exposure time: 90s.