

Phospho-SMO-S611/615 Rabbit pAb

Catalog No.: AP0939

Basic Information

Observed MW

86kDa

Calculated MW

86kDa

Category

Primary antibody

Applications

WB, ELISA

Cross-Reactivity

Human

Background

The protein encoded by this gene is a G protein-coupled receptor that interacts with the patched protein, a receptor for hedgehog proteins. The encoded protein transduces signals to other proteins after activation by a hedgehog protein/patched protein complex.

Recommended Dilutions

WB 1:500 - 1:1000

ELISA Recommended starting concentration is 1 µg/mL. Please optimize the concentration based on your specific assay requirements.

Immunogen Information

Gene ID

6608

Swiss Prot

Q99835

Immunogen

Synthetic peptide. This information is considered to be commercially sensitive.

Synonyms

Gx; CRJS; PHLS; SMOH; FZD11; Phospho-SMO-S611/615

Contact

☎ | 400-999-6126

✉ | cn.market@abclonal.com.cn

🌐 | www.abclonal.com.cn

Product Information

Source

Rabbit

Isotype

IgG

Purification

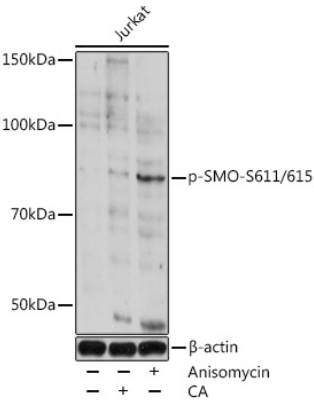
Affinity purification

Storage

Store at -20°C. Avoid freeze / thaw cycles.

Buffer: PBS with 0.01% thimerosal, 50% glycerol, pH7.3.

Validation Data



Western blot analysis of lysates from Jurkat cells, using Phospho-SMO-S611/615 Rabbit pAb (AP0939) at 1:1000 dilution. Jurkat cells were treated with Calyculin A (100 nM) at 37°C for 30 minutes. Jurkat cells were treated with Anisomycin (25 µg/mL) at 37°C for 20 minutes. Secondary antibody: HRP-conjugated Goat anti-Rabbit IgG (H+L) (AS014) at 1:10000 dilution. Lysates/proteins: 25µg per lane. Blocking buffer: 3% BSA. Detection: ECL Basic Kit (RM00020). Exposure time: 60s.