

Phospho-PPP2CA/PPP2CB-Y307 Rabbit pAb

Catalog No.: AP0927

3 Publications

Basic Information

Observed MW

38kDa

Calculated MW

Category

Primary antibody

Applications

WB, ELISA

Cross-Reactivity

Human, Mouse

Background

This gene encodes the phosphatase 2A catalytic subunit. Protein phosphatase 2A is one of the four major Ser/Thr phosphatases, and it is implicated in the negative control of cell growth and division. It consists of a common heteromeric core enzyme, which is composed of a catalytic subunit and a constant regulatory subunit, that associates with a variety of regulatory subunits. This gene encodes an alpha isoform of the catalytic subunit. [provided by RefSeq, Jul 2008]

Recommended Dilutions

WB 1:500 - 1:2000

ELISA Recommended starting concentration is 1 µg/mL. Please optimize the concentration based on your specific assay requirements.

Immunogen Information

Gene ID

5515/5516

Swiss Prot

P67775/P62714

Immunogen

Synthetic peptide. This information is considered to be commercially sensitive.

Synonyms

PPP2CA/PPP2CB; Phospho-PPP2CA/PPP2CB-Y307

Contact

☎ | 400-999-6126

✉ | cn.market@abclonal.com.cn

🌐 | www.abclonal.com.cn

Product Information

Source

Rabbit

Isotype

IgG

Purification

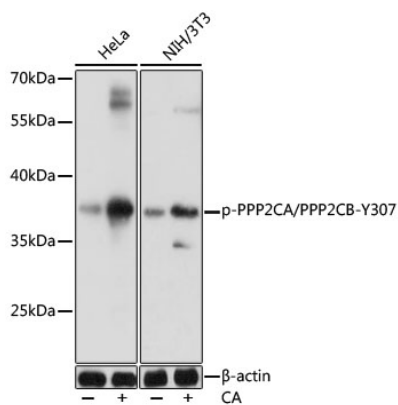
Affinity purification

Storage

Store at -20°C. Avoid freeze / thaw cycles.

Buffer: PBS with 0.01% thimerosal, 50% glycerol, pH7.3.

Validation Data



Western blot analysis of various lysates using Phospho-PPP2CA/PPP2CB-Y307 Rabbit pAb (AP0927) at 1:1000 dilution. HeLa cells were treated with Calyculin A (100nM) for 30 minutes after serum-starvation overnight. NIH/3T3 cells were treated with Calyculin A (100nM) for 30 minutes after serum-starvation overnight.
Secondary antibody: HRP-conjugated Goat anti-Rabbit IgG (H+L) (AS014) at 1:10000 dilution.
Lysates/proteins: 25 μ g per lane.
Blocking buffer: 3% BSA.
Detection: ECL Basic Kit (RM00020).
Exposure time: 1s.