

# Phospho-FOXO1-T24/FOXO3A-T32/FOXO4-T28 Rabbit pAb

Catalog No.: AP0892

## Basic Information

### Observed MW

65kDa/73kDa

### Calculated MW

### Category

Primary antibody

### Applications

WB, IHC-P, ELISA

### Cross-Reactivity

Human, Mouse, Rat

## Background

This gene belongs to the forkhead family of transcription factors which are characterized by a distinct forkhead domain. The specific function of this gene has not yet been determined; however, it may play a role in myogenic growth and differentiation. Translocation of this gene with PAX3 has been associated with alveolar rhabdomyosarcoma. [provided by RefSeq, Jul 2008]

## Recommended Dilutions

**WB** 1:100 - 1:500

**IHC-P** 1:50 - 1:200

**ELISA** Recommended starting concentration is 1 µg/mL. Please optimize the concentration based on your specific assay requirements.

## Immunogen Information

### Gene ID

2308/2309/4303

### Swiss Prot

Q12778/O43524/P98177

### Immunogen

Synthetic peptide. This information is considered to be commercially sensitive.

### Synonyms

FoxO1/FoxO3a/FoxO4; Phospho-FOXO1-T24/FOXO3A-T32/FOXO4-T28

## Contact

 | 400-999-6126

 | [cn.market@abclonal.com.cn](mailto:cn.market@abclonal.com.cn)

 | [www.abclonal.com.cn](http://www.abclonal.com.cn)

## Product Information

### Source

Rabbit

### Isotype

IgG

### Purification

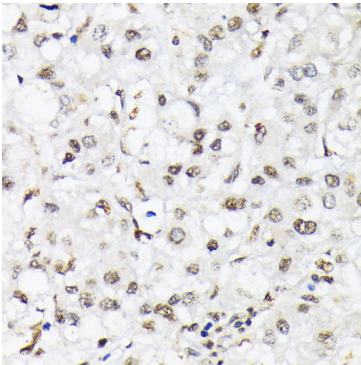
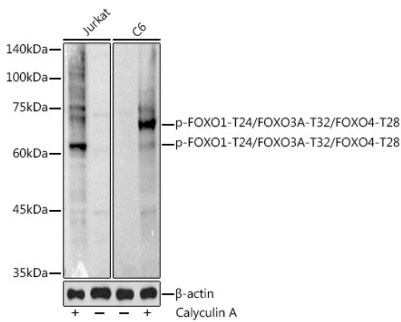
Affinity purification

### Storage

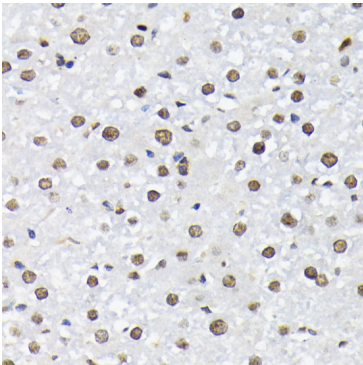
Store at -20°C. Avoid freeze / thaw cycles.

Buffer: PBS with 0.05% proclin300, 50% glycerol, pH7.3.

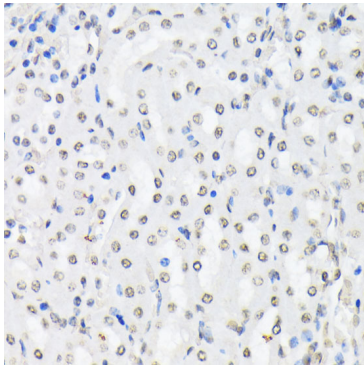
Validation Data



Immunohistochemistry analysis of paraffin-embedded Human liver cancer using Phospho-FOXO1-T24/FOXO3A-T32/FOXO4-T28 Rabbit pAb (AP0892) at dilution of 1:200 (40x lens). Microwave antigen retrieval performed with 0.01M Tris/EDTA Buffer (pH 9.0) prior to IHC staining.



Immunohistochemistry analysis of paraffin-embedded Rat liver using Phospho-FOXO1-T24/FOXO3A-T32/FOXO4-T28 Rabbit pAb (AP0892) at dilution of 1:200 (40x lens). Microwave antigen retrieval performed with 0.01M Tris/EDTA Buffer (pH 9.0) prior to IHC staining.



Immunohistochemistry analysis of paraffin-embedded Mouse kidney using Phospho-FOXO1-T24/FOXO3A-T32/FOXO4-T28 Rabbit pAb (AP0892) at dilution of 1:200 (40x lens). Microwave antigen retrieval performed with 0.01M Tris/EDTA Buffer (pH 9.0) prior to IHC staining.