

Phospho-STAT5-Y694 Rabbit pAb

Catalog No.: AP0887SP **15 Publications**

Basic Information

Observed MW

90 kDa

Calculated MW

87 kDa/90 kDa/91 kDa

Category

Primary antibody

Applications

WB,IHC-P,ELISA

Cross-Reactivity

Human, Mouse, Rat

Background

Carries out a dual signal transduction and activation of transcription. Mediates cellular responses to the cytokine KITLG/SCF and other growth factors. Mediates cellular responses to ERBB4. May mediate cellular responses to activated FGFR1, FGFR2, FGFR3 and FGFR4. Binds to the GAS element and activates PRL-induced transcription. Regulates the expression of milk proteins during lactation.

Recommended Dilutions

WB 1:5000-1:15000

IHC-P 1:2000 - 1:8000

ELISA Recommended starting concentration is 1 µg/mL. Please optimize the concentration based on your specific assay requirements. For high-ratio antibody dilutions (≥1:10000) a sequential dilution method is strongly recommended to ensure measurement accuracy.

Immunogen Information

Gene ID

6776/6777

Swiss Prot

P42229/P51692

Immunogen

This information is considered to be commercially sensitive.

Synonyms

MGF; STAT5; stat5a/stat5b; Phospho-STAT5-Y694

Product Information

Source

Rabbit

Isotype

IgG

Purification

Affinity purification

Storage

Store at -20°C. Avoid freeze / thaw cycles.

Buffer: PBS, pH 7.3, containing 50% glycerol. Preserved with Proclin300 or sodium azide.

May contain 0.05% BSA as specified on the Certificate of Analysis.

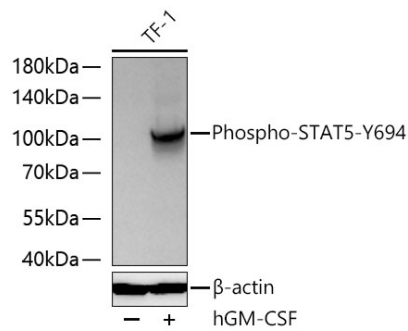
Contact

☎ | 400-999-6126

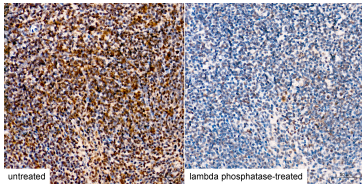
✉ | cn.market@abclonal.com.cn

🌐 | www.abclonal.com.cn

Validation Data



Western blot analysis of lysates from TF-1 cells using Phospho-STAT5-Y694 Rabbit pAb (AP0887SP) at 1:13000 dilution incubated at room temperature for 1.5 hours. TF-1 cells were treated with hGM-CSF (100 ng/mL) at 37°C for 10 minutes.
Secondary antibody: HRP-conjugated Goat anti-Rabbit IgG (H+L) (AS014) at 1:10000 dilution.
Lysates/proteins: 30 μ g per lane.
Blocking buffer: 3% nonfat dry milk in TBST.
Detection: ECL Basic Kit (RM00020).
Exposure time: 5 s.



Immunohistochemistry analysis of paraffin-embedded mouse spleen tissue, untreated (left) and lambda phosphatase-treated (right), using Phospho-STAT5-Y694 Rabbit pAb (AP0887SP) at a dilution of 1:3000 (40x lens). High pressure antigen retrieval performed with 0.01M Tris-EDTA Buffer (pH 9.0) prior to IHC staining.