

# Phospho-INSR-Y1146/IGF1R-Y1131 Rabbit pAb

Catalog No.: AP0863

## Basic Information

### Observed MW

95kDa

### Calculated MW

155kDa

### Category

Primary antibody

### Applications

WB, ELISA

### Cross-Reactivity

Human

## Background

This gene encodes a member of the receptor tyrosine kinase family of proteins. The encoded preproprotein is proteolytically processed to generate alpha and beta subunits that form a heterotetrameric receptor. Binding of insulin or other ligands to this receptor activates the insulin signaling pathway, which regulates glucose uptake and release, as well as the synthesis and storage of carbohydrates, lipids and protein. Mutations in this gene underlie the inherited severe insulin resistance syndromes including type A insulin resistance syndrome, Donohue syndrome and Rabson-Mendenhall syndrome. Alternative splicing results in multiple transcript variants. [provided by RefSeq, Oct 2015]

## Recommended Dilutions

**WB** 1:500 - 1:2000

**ELISA** Recommended starting concentration is 1 µg/mL. Please optimize the concentration based on your specific assay requirements.

## Immunogen Information

### Gene ID

3643/3480

### Swiss Prot

P06213/P08069

### Immunogen

Synthetic peptide. This information is considered to be commercially sensitive.

### Synonyms

INSR/IGF1R; Phospho-INSR-Y1146/IGF1R-Y1131

## Contact

☎ | 400-999-6126

✉ | [cn.market@abclonal.com.cn](mailto:cn.market@abclonal.com.cn)

🌐 | [www.abclonal.com.cn](http://www.abclonal.com.cn)

## Product Information

### Source

Rabbit

### Isotype

IgG

### Purification

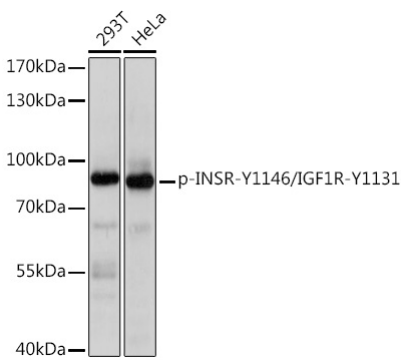
Affinity purification

### Storage

Store at -20°C. Avoid freeze / thaw cycles.

Buffer: PBS with 0.01% thimerosal, 50% glycerol, pH7.3.

# Validation Data



Western blot analysis of various lysates using Phospho-INSR-Y1146/IGF1R-Y1131 Rabbit pAb (AP0863) at 1:1000 dilution.  
Secondary antibody: HRP-conjugated Goat anti-Rabbit IgG (H+L) (AS014) at 1:10000 dilution.  
Lysates/proteins: 25µg per lane.  
Blocking buffer: 3% nonfat dry milk in TBST.  
Detection: ECL Basic Kit (RM00020).  
Exposure time: 90s.