

Phospho-DRP1-S616 Rabbit pAb

Catalog No.: AP0849SP **14 Publications**

Basic Information

Observed MW

70-82 kDa

Calculated MW

60-84 kDa

Category

Primary antibody

Applications

WB,IP,ELISA

Cross-Reactivity

Human, Mouse, Rat

Background

This gene encodes a member of the dynamin superfamily of GTPases. The encoded protein mediates mitochondrial and peroxisomal division, and is involved in developmentally regulated apoptosis and programmed necrosis. Dysfunction of this gene is implicated in several neurological disorders, including Alzheimer's disease. Mutations in this gene are associated with the autosomal dominant disorder, encephalopathy, lethal, due to defective mitochondrial and peroxisomal fission (EMPF). Alternative splicing results in multiple transcript variants encoding different isoforms.

Recommended Dilutions

WB 1:1000 - 1:2000

IP 0.5 µg - 4 µg antibody for
400 µg - 600 µg extracts
of whole cells

ELISA Recommended starting concentration is 1 µg/mL. Please optimize the concentration based on your specific assay requirements. For high-ratio antibody dilutions ($\geq 1:10000$) a sequential dilution method is strongly recommended to ensure measurement accuracy.

Immunogen Information

Gene ID

10059

Swiss Prot

O00429

Immunogen

Synthetic peptide. This information is considered to be commercially sensitive.

Synonyms

DLP1; DRP1; DVLP; EMPF; OPA5; EMPF1; DYMPLE; HDYNIV

Product Information

Source

Rabbit

Isotype

IgG

Purification

Affinity purification

Storage

Store at -20°C. Avoid freeze / thaw cycles.

Buffer: PBS, pH 7.3, containing 50% glycerol. Preserved with Proclin300 or sodium azide.

May contain 0.05% BSA as specified on the Certificate of Analysis.

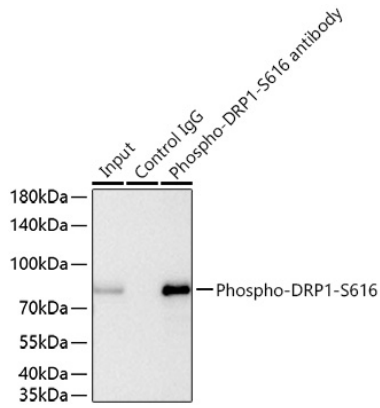
Contact

 | 400-999-6126

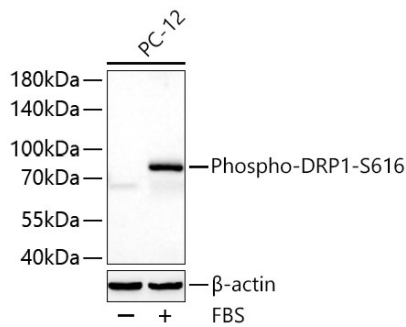
 | cn.market@abclonal.com.cn

 | www.abclonal.com.cn

Validation Data



Immunoprecipitation of Phospho-DRP1-S616 from 600 μ g extracts of C2C12 cells treated with FBS(16 h) was performed using 1 μ g of Phospho-DRP1-S616 Rabbit pAb (AP0849SP). Rabbit Control IgG (AC005) was used to precipitate the Control IgG sample. IP samples were eluted with 1x Laemmli Buffer. The Input lane represents 10% of the total input. Western blot analysis of immunoprecipitates was conducted using Phospho-DRP1-S616 Rabbit pAb (AP0849SP) at a dilution of 1:5000.



Western blot analysis of lysates from PC-12 cells using Phospho-DRP1-S616 Rabbit pAb (AP0849SP) at 1:1000 dilution incubated at room temperature for 1.5 hours. PC-12 cells were treated with FBS at 30°C for 5min.

Secondary antibody: HRP-conjugated Goat anti-Rabbit IgG (H+L) (AS014) at 1:10000 dilution.

Lysates/proteins: 30 μ g per lane.

Blocking buffer: 3% nonfat dry milk in TBST.

Detection: ECL Basic Kit (RM00020).

Exposure time: 90 s.