

Phospho-EEF2K-S366 Rabbit pAb

Catalog No.: AP0845

3 Publications

Basic Information

Observed MW

110kDa

Calculated MW

82kDa

Category

Primary antibody

Applications

WB, ELISA

Cross-Reactivity

Human, Mouse, Rat

Background

This gene encodes a highly conserved protein kinase in the calmodulin-mediated signaling pathway that links activation of cell surface receptors to cell division. This kinase is involved in the regulation of protein synthesis. It phosphorylates eukaryotic elongation factor 2 (EEF2) and thus inhibits the EEF2 function. The activity of this kinase is increased in many cancers and may be a valid target for anti-cancer treatment.

Recommended Dilutions

WB 1:500 - 1:2000

ELISA Recommended starting concentration is 1 µg/mL. Please optimize the concentration based on your specific assay requirements.

Immunogen Information

Gene ID

29904

Swiss Prot

O00418

Immunogen

Synthetic peptide. This information is considered to be commercially sensitive.

Synonyms

eEF-2K; CaMKIII; HSU93850; Phospho-EEF2K-S366

Contact

☎ | 400-999-6126

✉ | cn.market@abclonal.com.cn

🌐 | www.abclonal.com.cn

Product Information

Source

Rabbit

Isotype

IgG

Purification

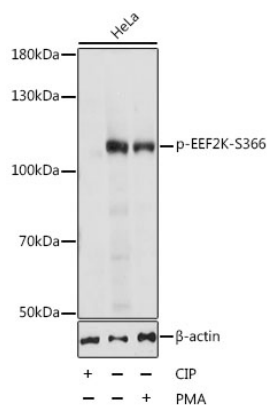
Affinity purification

Storage

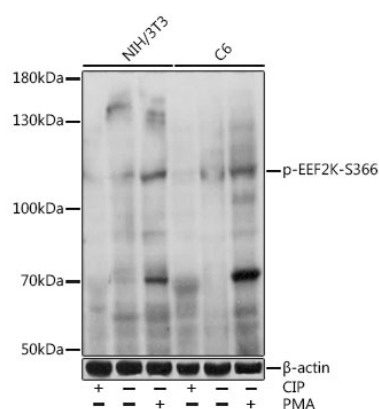
Store at -20°C. Avoid freeze / thaw cycles.

Buffer: PBS with 0.01% thimerosal, 50% glycerol, pH7.3.

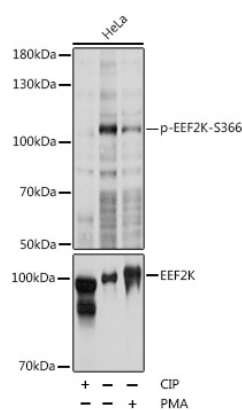
Validation Data



Western blot analysis of lysates from HeLa cells, using Phospho-EEF2K-S366 Rabbit pAb (AP0845) at 1:1000 dilution. HeLa cell lysate were treated with CIP (20ul CIP for each 400ul cell lysate) at 37°C for 1 hour or treated with PMA/TPA (200nM) for 15 minutes after serum-starvation overnight. Secondary antibody: HRP-conjugated Goat anti-Rabbit IgG (H+L) (AS014) at 1:10000 dilution. Lysates/proteins: 25μg per lane. Blocking buffer: 3% BSA. Detection: ECL Basic Kit (RM00020). Exposure time: 15s.



Western blot analysis of various lysates using Phospho-EEF2K-S366 Rabbit pAb (AP0845) at 1:1000 dilution. NIH/3T3 and C6 cells were treated with CIP(20uL/400ul) at 37°C for 1 hour or PMA/TPA (200 nM) at 37°C for 30 minutes after serum-starvation overnight. Secondary antibody: HRP-conjugated Goat anti-Rabbit IgG (H+L) (AS014) at 1:10000 dilution. Lysates/proteins: 25μg per lane. Blocking buffer: 3% nonfat dry milk in TBST. Detection: ECL Basic Kit (RM00020). Exposure time: 30s.



Western blot analysis of lysates from HeLa cells, using Phospho-EEF2K-S366 Rabbit pAb (A5404). HeLa cell lysate were treated with CIP (20ul CIP for each 400ul cell lysate) at 37°C for 1 hour or treated with PMA/TPA (200nM) for 15 minutes after serum-starvation overnight. Secondary antibody: HRP-conjugated Goat anti-Rabbit IgG (H+L) (AS014) at 1:10000 dilution. Lysates/proteins: 25μg per lane. Blocking buffer: 3% BSA. Detection: ECL Basic Kit (RM00020). Exposure time: 15s.