

# Phospho-PLC gamma 1 (PLCG1)-S1248 Rabbit pAb

Catalog No.: AP0827

## Basic Information

### Observed MW

149kDa

### Calculated MW

149kDa

### Category

Primary antibody

### Applications

ELISA, WB, IHC-P

### Cross-Reactivity

Human, Mouse, Rat

## Background

The protein encoded by this gene catalyzes the formation of inositol 1,4,5-trisphosphate and diacylglycerol from phosphatidylinositol 4,5-bisphosphate. This reaction uses calcium as a cofactor and plays an important role in the intracellular transduction of receptor-mediated tyrosine kinase activators. For example, when activated by SRC, the encoded protein causes the Ras guanine nucleotide exchange factor RasGRP1 to translocate to the Golgi, where it activates Ras. Also, this protein has been shown to be a major substrate for heparin-binding growth factor 1 (acidic fibroblast growth factor)-activated tyrosine kinase. Two transcript variants encoding different isoforms have been found for this gene.

## Recommended Dilutions

WB 1:500 - 1:2000

IHC-P 1:10 - 1:100

## Immunogen Information

### Gene ID

5335

### Swiss Prot

P19174

### Immunogen

A synthetic phosphorylated peptide around S1248 of human PLC gamma 1 (PLCG1) (NP\_002651.2).

### Synonyms

PLC1; NCKAP3; PLC-II; PLC148; PLCgamma1; Phospho-PLC gamma 1 (PLCG1)-S1248

## Contact

☎ | 400-999-6126

✉ | [cn.market@abclonal.com.cn](mailto:cn.market@abclonal.com.cn)

🌐 | [www.abclonal.com.cn](http://www.abclonal.com.cn)

## Product Information

### Source

Rabbit

### Isotype

IgG

### Purification

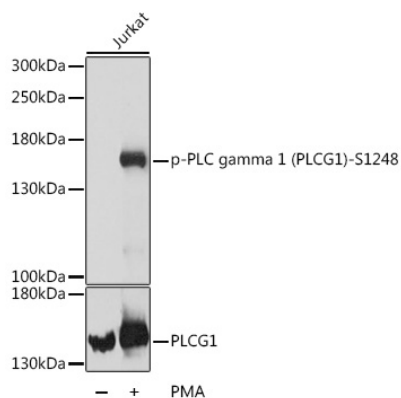
Affinity purification

### Storage

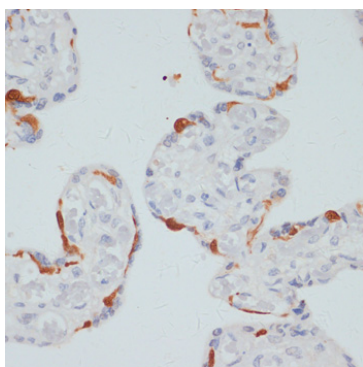
Store at -20°C. Avoid freeze / thaw cycles.

Buffer: PBS with 0.01% thimerosal, 50% glycerol, pH7.3.

## Validation Data



Western blot analysis of lysates from Jurkat cells, using Phospho-PLC gamma 1 (PLCG1)-S1248 Rabbit pAb (AP0827) at dilution or PLC gamma 1 (PLCG1) antibody (A15704). Jurkat cells were treated by PMA/TPA (200 nM) at 37°C for 10 minutes.  
Secondary antibody: HRP Goat Anti-Rabbit IgG (H+L) (AS014) at 1:10000 dilution.  
Lysates/proteins: 25µg per lane.  
Blocking buffer: 3% BSA.  
Detection: ECL Basic Kit (RM00020).  
Exposure time: 90s.



Immunohistochemistry analysis of paraffin-embedded Human placenta using Phospho-PLC gamma 1 (PLCG1)-S1248 Rabbit pAb (AP0827) at dilution of 1:100 (40x lens). Perform microwave antigen retrieval with 10 mM Tris/EDTA buffer pH 9.0 before commencing with IHC staining protocol.