

# Phospho- $\beta$ -Catenin-S675 Rabbit pAb

Catalog No.: AP0795 **2 Publications**

## Basic Information

### Observed MW

100 kDa

### Calculated MW

85 kDa

### Category

Primary antibody

### Applications

WB,IP,IF-P,ELISA

### Cross-Reactivity

Human, Mouse, Rat

## Background

The protein encoded by this gene is part of a complex of proteins that constitute adherens junctions (AJs). AJs are necessary for the creation and maintenance of epithelial cell layers by regulating cell growth and adhesion between cells. The encoded protein also anchors the actin cytoskeleton and may be responsible for transmitting the contact inhibition signal that causes cells to stop dividing once the epithelial sheet is complete. Finally, this protein binds to the product of the APC gene, which is mutated in adenomatous polyposis of the colon. Mutations in this gene are a cause of colorectal cancer (CRC), pilomatixoma (PTR), medulloblastoma (MDB), and ovarian cancer. Alternative splicing results in multiple transcript variants.

## Recommended Dilutions

**WB** 1:500 - 1:5000

**IP** 0.5  $\mu$ g - 4  $\mu$ g antibody for  
400  $\mu$ g - 600  $\mu$ g extracts  
of whole cells

**IF-P** 1:50 - 1:200

**ELISA** Recommended starting  
concentration is 1  $\mu$ g/mL.  
Please optimize the  
concentration based on  
your specific assay  
requirements.

## Contact

 | 400-999-6126

 | [cn.market@abclonal.com.cn](mailto:cn.market@abclonal.com.cn)

 | [www.abclonal.com.cn](http://www.abclonal.com.cn)

## Immunogen Information

### Gene ID

1499

### Swiss Prot

P35222

### Immunogen

Synthetic peptide. This information is considered to be commercially sensitive.

### Synonyms

EVR7; CTNNB; MRD19; NEDSDV; armadillo; Phospho- $\beta$ -Catenin-S675

## Product Information

### Source

Rabbit

### Isotype

IgG

### Purification

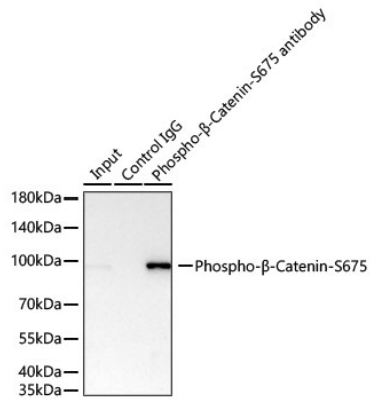
Affinity purification

### Storage

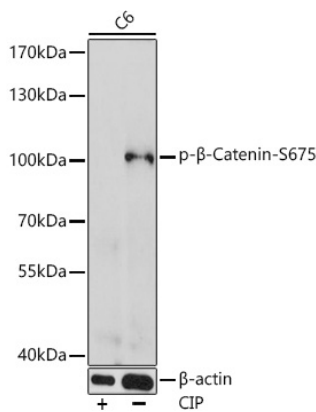
Store at -20°C. Avoid freeze / thaw cycles.

Buffer: PBS, pH 7.3, containing 50% glycerol. Preserved with Proclin300 or sodium azide.  
May contain 0.05% BSA as specified on the Certificate of Analysis.

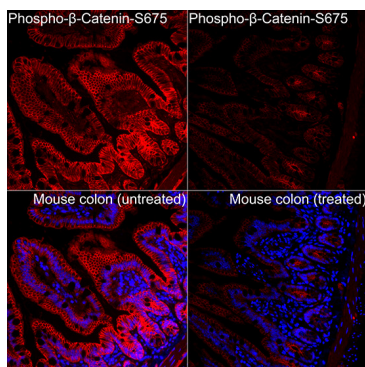
## Validation Data



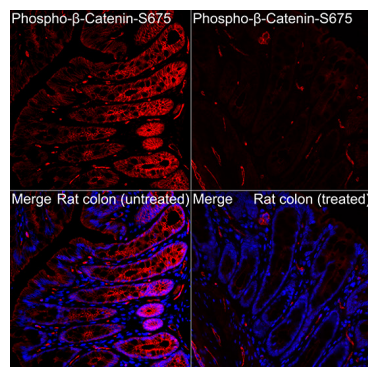
Immunoprecipitation of Phospho-β-Catenin-S675 from 300 μg extracts of MKN-45 cells was performed using 2 μg of Phospho-β-Catenin-S675 Rabbit pAb (AP0795). Rabbit Control IgG (AC005) was used to precipitate the Control IgG sample. IP samples were eluted with 1x Laemmli Buffer. The Input lane represents 10% of the total input. Western blot analysis of immunoprecipitates was conducted using Phospho-β-Catenin-S675 Rabbit pAb (AP0795) at a dilution of 1:5000.



Western blot analysis of lysates from C6 cells, using Phospho-β-Catenin-S675 Rabbit pAb (AP0795) at 1:1000 dilution. C6 cell lysates were treated by CIP at 37°C for 1 hour. Secondary antibody: HRP-conjugated Goat anti-Rabbit IgG (H+L) (AS014) at 1:10000 dilution. Lysates/proteins: 25μg per lane. Blocking buffer: 3% BSA. Detection: ECL Enhanced Kit (RM00021). Exposure time: 180s.



Immunofluorescence analysis of Mouse colon(treated with λPP) and Mouse colon(untreated) tissue using Phospho-β-Catenin-S675 Rabbit pAb (AP0795) at a dilution of 1:100 (40x lens). Secondary antibody: Cy3-conjugated Goat anti-Rabbit IgG (H+L)(AS007) at 1:500 dilution. Blue: DAPI for nuclear staining. High pressure antigen retrieval performed with 0.01M Citrate Buffer (pH 6.0) prior to IF staining.



Immunofluorescence analysis of Rat colon(treated with λPP) and Rat colon tissue using Phospho-β-Catenin-S675 Rabbit pAb (AP0795) at a dilution of 1:100 (40x lens). Secondary antibody: Cy3-conjugated Goat anti-Rabbit IgG (H+L)(AS007) at 1:500 dilution. Blue: DAPI for nuclear staining. High pressure antigen retrieval performed with 0.01M Citrate Buffer (pH 6.0) prior to IF staining.