

# Phospho-Lamin A/C-S22 Rabbit pAb

Catalog No.: AP0777 **2 Publications**

## Basic Information

### Observed MW

69kDa, 78kDa

### Calculated MW

74kDa

### Category

Primary antibody

### Applications

WB, IP, ELISA

### Cross-Reactivity

Human, Rat

## Background

The protein encoded by this gene is part of the nuclear lamina, a two-dimensional matrix of proteins located next to the inner nuclear membrane. The lamin family of proteins make up the matrix and are highly conserved in evolution. During mitosis, the lamina matrix is reversibly disassembled as the lamin proteins are phosphorylated. Lamin proteins are thought to be involved in nuclear stability, chromatin structure and gene expression. Vertebrate lamins consist of two types, A and B. Alternative splicing results in multiple transcript variants. Mutations in this gene lead to several diseases: Emery-Dreifuss muscular dystrophy, familial partial lipodystrophy, limb girdle muscular dystrophy, dilated cardiomyopathy, Charcot-Marie-Tooth disease, and Hutchinson-Gilford progeria syndrome.

## Recommended Dilutions

**WB** 1:500 - 1:2000**IP** 0.5µg-4µg antibody for  
200µg-400µg extracts of  
whole cells**ELISA** Recommended starting  
concentration is 1 µg/mL.  
Please optimize the  
concentration based on  
your specific assay  
requirements.

## Immunogen Information

### Gene ID

4000

### Swiss Prot

P02545

### Immunogen

Synthetic peptide. This information is considered to be commercially sensitive.

### Synonyms

FPL; IDC; LFP; CDDC; EMD2; FPLD; HGPS; LDP1; LMN1; LMNC; MADA; PRO1; CDCD1; CMD1A; FPLD2; LMNL1; CMT2B1; LGMD1B; Phospho-Lamin A/C-S22

## Contact

 | 400-999-6126 | [cn.market@abclonal.com.cn](mailto:cn.market@abclonal.com.cn) | [www.abclonal.com.cn](http://www.abclonal.com.cn)

## Product Information

### Source

Rabbit

### Isotype

IgG

### Purification

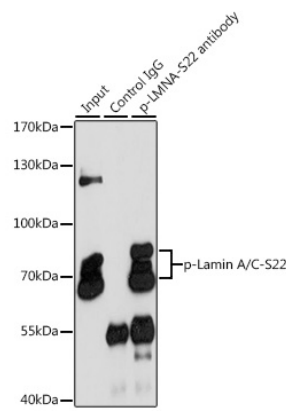
Affinity purification

### Storage

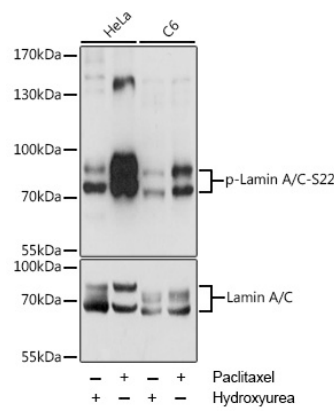
Store at -20°C. Avoid freeze / thaw cycles.

Buffer: PBS with 0.01% thimerosal, 50% glycerol, pH7.3.

Validation Data



Immunoprecipitation analysis of 200 µg extracts of HeLa cells, using 3 µg Phospho-Lamin A/C-S22 pAb (AP0777). Western blot was performed from the immunoprecipitate using Phospho-Lamin A/C-S22 pAb (AP0777) at a dilution of 1:1000. HeLa cells were treated with Paclitaxel (100 nM/mL) at 37°C for 20 hours.



Western blot analysis of various lysates using Phospho-Lamin A/C-S22 Rabbit pAb (AP0777) at 1:2000 dilution or Lamin A antibody (A0249). HeLa cells were treated with Hydroxyurea (4 mM) at 37°C for 20 hours or treated with Paclitaxel (100 nM/mL) at 37°C for 20 hours. C6 cells were treated with Hydroxyurea (4 mM) at 37°C for 20 hours or treated with Paclitaxel (100 nM) at 37°C for 20 hours. Secondary antibody: HRP-conjugated Goat anti-Rabbit IgG (H+L) (AS014) at 1:10000 dilution. Lysates/proteins: 25µg per lane. Blocking buffer: 3% BSA. Detection: ECL Enhanced Kit (RM00021). Exposure time: 1s.