

Phospho-EIF4B-S422 Rabbit pAb

Catalog No.: AP0775

Basic Information

Observed MW

80kDa

Calculated MW

69kDa

Category

Primary antibody

Applications

WB, ELISA

Cross-Reactivity

Human

Background

Enables RNA binding activity. Predicted to be involved in eukaryotic translation initiation factor 4F complex assembly and formation of translation preinitiation complex. Located in cytosol. Biomarker of autism spectrum disorder and major depressive disorder.

Recommended Dilutions

WB 1:500 - 1:2000

ELISA Recommended starting concentration is 1 µg/mL. Please optimize the concentration based on your specific assay requirements.

Immunogen Information

Gene ID

1975

Swiss Prot

P23588

Immunogen

Synthetic peptide. This information is considered to be commercially sensitive.

Synonyms

EIF-4B; PRO1843; Phospho-EIF4B-S422

Contact

 | 400-999-6126

 | cn.market@abclonal.com.cn

 | www.abclonal.com.cn

Product Information

Source

Rabbit

Isotype

IgG

Purification

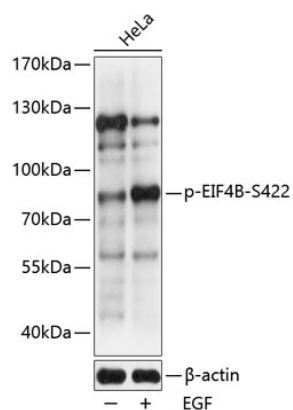
Affinity purification

Storage

Store at -20°C. Avoid freeze / thaw cycles.

Buffer: PBS with 0.01% thimerosal, 50% glycerol, pH7.3.

Validation Data



Western blot analysis of lysates from HeLa cells, using Phospho-EIF4B-S422 Rabbit pAb (AP0775) at 1:2000 dilution. HeLa cells were treated with EGF (100ng/mL) for 30 minutes after serum-starvation overnight.

Secondary antibody: HRP-conjugated Goat anti-Rabbit IgG (H+L) (AS014) at 1:10000 dilution.

Lysates/proteins: 25μg per lane.

Blocking buffer: 3% BSA.

Detection: ECL Basic Kit (RM00020).

Exposure time: 60s.