

Phospho-DNA-PKcs-S2056 Rabbit pAb

Catalog No.: AP0621 **5 Publications**

Basic Information

Observed MW

469kDa

Calculated MW

469kDa

Category

Primary antibody

Applications

WB, IHC-P, IF/ICC, ELISA

Cross-Reactivity

Human

Background

This gene encodes the catalytic subunit of the DNA-dependent protein kinase (DNA-PK). It functions with the Ku70/Ku80 heterodimer protein in DNA double strand break repair and recombination. The protein encoded is a member of the PI3/PI4-kinase family.

Recommended Dilutions

WB 1:500 - 1:2000

IHC-P 1:100 - 1:500

IF/ICC 1:50 - 1:200

ELISA Recommended starting concentration is 1 µg/mL. Please optimize the concentration based on your specific assay requirements.

Immunogen Information

Gene ID

5591

Swiss Prot

P78527

Immunogen

Synthetic peptide. This information is considered to be commercially sensitive.

Synonyms

HYRC; p350; DNAPK; DNP1; HYRC1; IMD26; XRCC7; DNAPKc; DNA-PKC; DNA-PKcs; Phospho-DNA-PKcs-S2056

Contact

☎ | 400-999-6126

✉ | cn.market@abclonal.com.cn

🌐 | www.abclonal.com.cn

Product Information

Source

Rabbit

Isotype

IgG

Purification

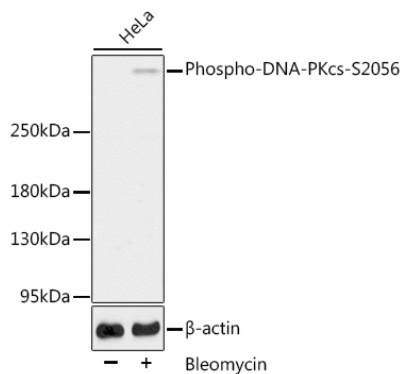
Affinity purification

Storage

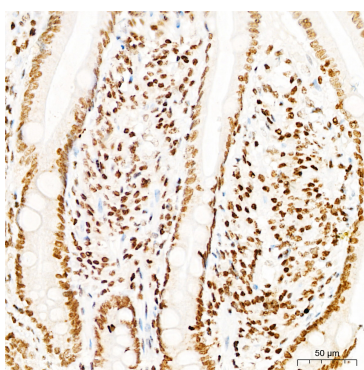
Store at -20°C. Avoid freeze / thaw cycles.

Buffer: PBS containing 50% glycerol, preserved with proclin300 or sodium azide (as specified on the Certificate of Analysis), pH 7.3.

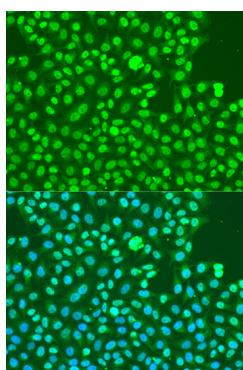
Validation Data



Western blot analysis of lysates from HeLa cells, using Phospho-DNA-PKcs-S2056 Rabbit pAb (AP0621).
Secondary antibody: HRP-conjugated Goat anti-Rabbit IgG (H+L) (AS014) at 1:10000 dilution.
Lysates/proteins: 25µg per lane.
Blocking buffer: 3% BSA.



Immunohistochemistry analysis of paraffin-embedded Human small intestine tissue using Phospho-DNA-PKcs-S2056 Rabbit pAb (AP0621) at a dilution of 1:300 (40x lens). High pressure antigen retrieval was performed with 0.01 M citrate buffer (pH 6.0) prior to IHC staining.



Immunofluorescence analysis of U2OS cells using Phospho-DNA-PKcs-S2056 Rabbit pAb (AP0621) at dilution of 1:100. Secondary antibody: Cy3-conjugated Goat anti-Rabbit IgG (H+L) (AS007) at 1:500 dilution. Blue: DAPI for nuclear staining.