

Phospho-CD115/CSF-1R-Y708 Rabbit pAb

Catalog No.: AP0609

Basic Information

Observed MW

175kDa

Calculated MW

108kDa

Category

Primary antibody

Applications

WB,ELISA

Cross-Reactivity

Human

Background

The protein encoded by this gene is the receptor for colony stimulating factor 1, a cytokine which controls the production, differentiation, and function of macrophages. This receptor mediates most if not all of the biological effects of this cytokine. Ligand binding activates the receptor kinase through a process of oligomerization and transphosphorylation. The encoded protein is a tyrosine kinase transmembrane receptor and member of the CSF1/PDGF receptor family of tyrosine-protein kinases. Mutations in this gene have been associated with a predisposition to myeloid malignancy. The first intron of this gene contains a transcriptionally inactive ribosomal protein L7 processed pseudogene oriented in the opposite direction. Alternative splicing results in multiple transcript variants. Expression of a splice variant from an LTR promoter has been found in Hodgkin lymphoma (HL), HL cell lines and anaplastic large cell lymphoma.

Recommended Dilutions

WB 1:500 - 1:1000**ELISA** Recommended starting concentration is 1 µg/mL. Please optimize the concentration based on your specific assay requirements.

Immunogen Information

Gene ID

1436

Swiss Prot

P07333

Immunogen

Synthetic peptide. This information is considered to be commercially sensitive.

Synonyms

FMS; CSFR; FIM2; GPSC; HDLS; C-FMS; CD115; HDLS1; CSF-1R; BANDDOS; M-CSF-R; Phospho-CD115/CSF-1R-Y708

Contact

 | 400-999-6126 | cn.market@abclonal.com.cn | www.abclonal.com.cn

Product Information

Source

Rabbit

Isotype

IgG

Purification

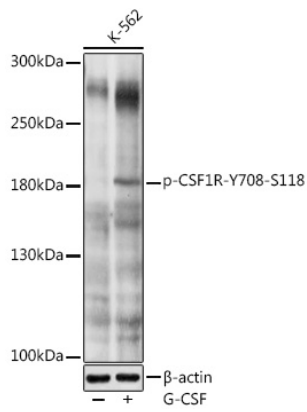
Affinity purification

Storage

Store at -20°C. Avoid freeze / thaw cycles.

Buffer: PBS with 0.01% thimerosal, 50% glycerol, pH7.3.

Validation Data



Western blot analysis of lysates from K-562 cells, using Phospho-CD115/CSF-1R-Y708 Rabbit pAb (AP0609) at 1:1000 dilution. K-562 cells were treated with G-CSF (25 ng/ml) at 37°C for 30 minutes after serum-starvation overnight.

Secondary antibody: HRP-conjugated Goat anti-Rabbit IgG (H+L) (AS014) at 1:10000 dilution.

Lysates/proteins: 25µg per lane.

Blocking buffer: 3% nonfat dry milk in TBST.

Detection: ECL Basic Kit (RM00020).

Exposure time: 1s.