

# Phospho-CDK4-T172 Rabbit pAb

Catalog No.: AP0593 **11 Publications**

## Basic Information

**Observed MW**

33kDa

**Calculated MW**

34kDa

**Category**

Primary antibody

**Applications**

WB,IF-P,ELISA

**Cross-Reactivity**

Human, Mouse, Rat

## Background

The protein encoded by this gene is a member of the Ser/Thr protein kinase family. This protein is highly similar to the gene products of *S. cerevisiae* cdc28 and *S. pombe* cdc2. It is a catalytic subunit of the protein kinase complex that is important for cell cycle G1 phase progression. The activity of this kinase is restricted to the G1-S phase, which is controlled by the regulatory subunits D-type cyclins and CDK inhibitor p16(INK4a). This kinase was shown to be responsible for the phosphorylation of retinoblastoma gene product (Rb). Mutations in this gene as well as in its related proteins including D-type cyclins, p16(INK4a) and Rb were all found to be associated with tumorigenesis of a variety of cancers. Multiple polyadenylation sites of this gene have been reported.

## Recommended Dilutions

**WB** 1:500 - 1:2000**IF-P** 1:100 - 1:200**ELISA** Recommended starting concentration is 1 µg/mL. Please optimize the concentration based on your specific assay requirements.

## Immunogen Information

**Gene ID**

1019

**Swiss Prot**

P11802

**Immunogen**

Synthetic peptide. This information is considered to be commercially sensitive.

**Synonyms**

CMM3; PSK-J3; Phospho-CDK4-T172

## Contact

 | 400-999-6126 | [cn.market@abclonal.com.cn](mailto:cn.market@abclonal.com.cn) | [www.abclonal.com.cn](http://www.abclonal.com.cn)

## Product Information

**Source**

Rabbit

**Isotype**

IgG

**Purification**

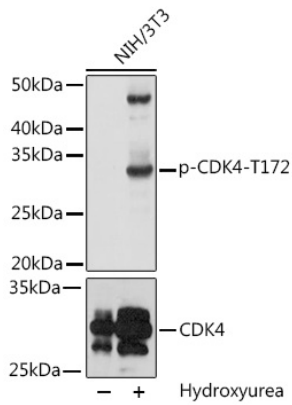
Affinity purification

**Storage**

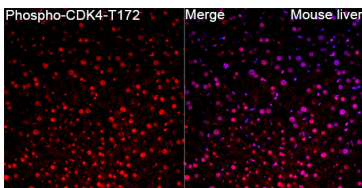
Store at -20°C. Avoid freeze / thaw cycles.

Buffer: PBS with 0.09% Sodium azide,50% glycerol,pH7.3.

## Validation Data



Western blot analysis of lysates from NIH/3T3 cells, using Phospho-CDK4-T172 Rabbit pAb (A0366). NIH/3T3 cells were treated with Hydroxyurea (4 mM) at 37°C for 20 hours. Secondary antibody: HRP-conjugated Goat anti-Rabbit IgG (H+L) (AS014) at 1:10000 dilution. Lysates/proteins: 25µg per lane. Blocking buffer: 3% BSA. Detection: ECL Basic Kit (RM00020). Exposure time: 60s.



Immunofluorescence analysis of Mouse liver tissue using Phospho-CDK4-T172 Rabbit pAb (AP0593) at a dilution of 1:100 (40x lens). Secondary antibody: Cy3-conjugated Goat anti-Rabbit IgG (H+L)(AS007) at 1:500 dilution. Blue: DAPI for nuclear staining. High pressure antigen retrieval performed with 0.01M Citrate Buffer (pH 6.0) prior to IF staining.