

Phospho-GSK3 β -Y216 + GSK3 α -Y279 Rabbit pAb

Catalog No.: AP0512

Basic Information

Observed MW

50kDa

Calculated MW

47kDa

Category

Primary antibody

Applications

WB, ELISA

Cross-Reactivity

Human

Background

The protein encoded by this gene is a serine-threonine kinase, belonging to the glycogen synthase kinase subfamily. It is involved in energy metabolism, neuronal cell development, and body pattern formation. Polymorphisms in this gene have been implicated in modifying risk of Parkinson disease, and studies in mice show that overexpression of this gene may be relevant to the pathogenesis of Alzheimer disease. Alternatively spliced transcript variants encoding different isoforms have been found for this gene.

Recommended Dilutions

WB 1:500 - 1:2000

ELISA Recommended starting concentration is 1 μ g/mL. Please optimize the concentration based on your specific assay requirements.

Immunogen Information

Gene ID

2931/2932

Swiss Prot

P49841

Immunogen

Synthetic peptide. This information is considered to be commercially sensitive.

Synonyms

GSK3B; gsk-3 β ; Phospho-GSK3 β -Y216 + GSK3 α -Y279

Contact

☎ | 400-999-6126

✉ | cn.market@abclonal.com.cn

🌐 | www.abclonal.com.cn

Product Information

Source

Rabbit

Isotype

IgG

Purification

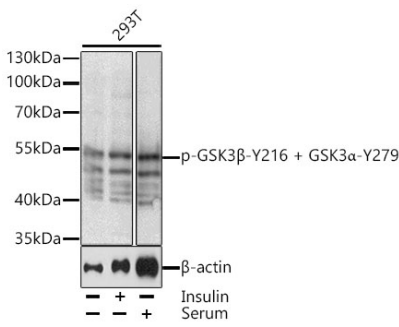
Affinity purification

Storage

Store at -20°C. Avoid freeze / thaw cycles.

Buffer: PBS with 0.02% sodium azide, 50% glycerol, pH7.3.

Validation Data



Western blot analysis of lysates from 293T cells, using Phospho-GSK3β-Y216 + GSK3α-Y279 Rabbit pAb (AP0512) at 1:1000 dilution. 293T cells were treated with Insulin (100nM) for 10 minutes or treated with 10% FBS for 30 minutes after serum-starvation overnight. Secondary antibody: HRP-conjugated Goat anti-Rabbit IgG (H+L) (AS014) at 1:10000 dilution. Lysates/proteins: 25μg per lane. Blocking buffer: 3% BSA.