

# Phospho-STAT1-S727 Rabbit pAb

Catalog No.: AP0453

6 Publications

## Basic Information

**Observed MW**

87kDa

**Calculated MW**

87kDa

**Category**

Primary antibody

**Applications**

WB, IHC-P, IF/ICC, ELISA

**Cross-Reactivity**

Human, Mouse, Rat

## Background

The protein encoded by this gene is a member of the STAT protein family. In response to cytokines and growth factors, STAT family members are phosphorylated by the receptor associated kinases, and then form homo- or heterodimers that translocate to the cell nucleus where they act as transcription activators. The protein encoded by this gene can be activated by various ligands including interferon-alpha, interferon-gamma, EGF, PDGF and IL6. This protein mediates the expression of a variety of genes, which is thought to be important for cell viability in response to different cell stimuli and pathogens. The protein plays an important role in immune responses to viral, fungal and mycobacterial pathogens. Mutations in this gene are associated with Immunodeficiency 31B, 31A, and 31C.

## Recommended Dilutions

**WB** 1:500 - 1:2000**IHC-P** 1:50 - 1:100**IF/ICC** 1:100 - 1:200

**ELISA** Recommended starting concentration is 1 µg/mL. Please optimize the concentration based on your specific assay requirements.

## Immunogen Information

**Gene ID**

6772

**Swiss Prot**

P42224

**Immunogen**

Synthetic peptide. This information is considered to be commercially sensitive.

**Synonyms**

CANDF7; IMD31A; IMD31B; IMD31C; ISGF-3; STAT91; Phospho-STAT1-S727

## Contact

 | 400-999-6126 | [cn.market@abclonal.com.cn](mailto:cn.market@abclonal.com.cn) | [www.abclonal.com.cn](http://www.abclonal.com.cn)

## Product Information

**Source**

Rabbit

**Isotype**

IgG

**Purification**

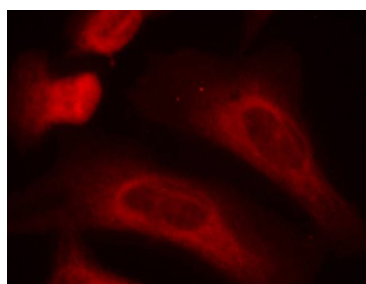
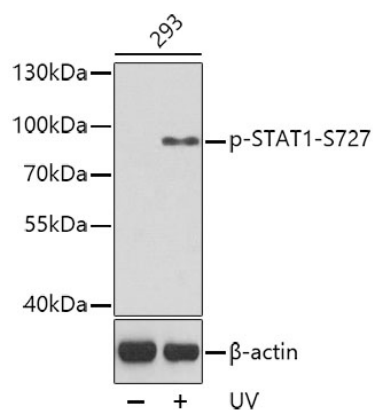
Affinity purification

**Storage**

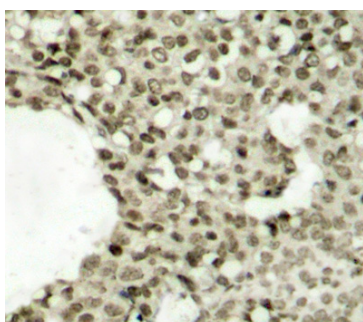
Store at -20°C. Avoid freeze / thaw cycles.

Buffer: PBS with 0.05% proclin300, 50% glycerol, pH7.3.

## Validation Data



Immunofluorescence analysis of methanol-fixed HeLa cells using Phospho-STAT1-S727 Rabbit pAb (AP0453).



Immunohistochemistry analysis of paraffin-embedded Human breast carcinoma tissue, using Phospho-STAT1-S727 Rabbit pAb (AP0453). Microwave antigen retrieval performed with 0.01M Tris/EDTA Buffer (pH 9.0) prior to IHC staining.