

Phospho-SRC Family-Y416 Rabbit pAb

Catalog No.: AP0452 **9 Publications**

Basic Information

Observed MW

60kDa

Calculated MW

60kDa

Category

Primary antibody

Applications

WB, ELISA

Cross-Reactivity

Human, Mouse, Rat

Background

This gene is highly similar to the v-src gene of Rous sarcoma virus. This proto-oncogene may play a role in the regulation of embryonic development and cell growth. The protein encoded by this gene is a tyrosine-protein kinase whose activity can be inhibited by phosphorylation by c-SRC kinase. Mutations in this gene could be involved in the malignant progression of colon cancer. Two transcript variants encoding the same protein have been found for this gene.

Recommended Dilutions

WB 1:500 - 1:1000

ELISA Recommended starting concentration is 1 µg/mL. Please optimize the concentration based on your specific assay requirements.

Immunogen Information

Gene ID

6714/2534/3932/7525/3055/4067

Swiss Prot

P12931/P06241/P06239/P07947/P08631/P07948

Immunogen

Synthetic peptide. This information is considered to be commercially sensitive.

Synonyms

ASV; SRC1; THC6; c-SRC; p60-Src; SRC; Phospho-SRC Family-Y416

Contact

☎ | 400-999-6126

✉ | cn.market@abclonal.com.cn

🌐 | www.abclonal.com.cn

Product Information

Source

Rabbit

Isotype

IgG

Purification

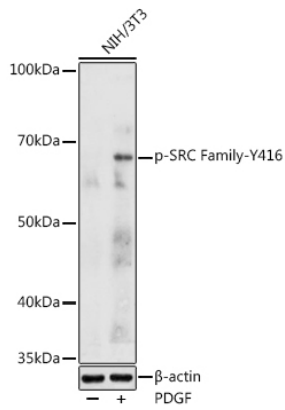
Affinity purification

Storage

Store at -20°C. Avoid freeze / thaw cycles.

Buffer: PBS containing 50% glycerol, preserved with proclin300 or sodium azide (as specified on the Certificate of Analysis), pH 7.3.

Validation Data



Western blot analysis of lysates from NIH/3T3 cells, using Phospho-SRC Family-Y416 Rabbit pAb (AP0452) at 1:1000 dilution. NIH/3T3 cells were treated with PDGF (100 ng/ml) at 37°C for 30 minutes after serum-starvation overnight.
Secondary antibody: HRP-conjugated Goat anti-Rabbit IgG (H+L) (AS014) at 1:10000 dilution.
Lysates/proteins: 25µg per lane.
Blocking buffer: 3% nonfat dry milk in TBST.
Detection: ECL Enhanced Kit (RM00021).
Exposure time: 180s.