

# Phospho-MAPKAPK-2/MK2-T334 Rabbit pAb

Catalog No.: AP0396

2 Publications

## Basic Information

### Observed MW

### Calculated MW

46kDa

### Category

Primary antibody

### Applications

IHC-P,ELISA

### Cross-Reactivity

Human, Mouse, Rat

## Background

This gene encodes a member of the Ser/Thr protein kinase family. This kinase is regulated through direct phosphorylation by p38 MAP kinase. In conjunction with p38 MAP kinase, this kinase is known to be involved in many cellular processes including stress and inflammatory responses, nuclear export, gene expression regulation and cell proliferation. Heat shock protein HSP27 was shown to be one of the substrates of this kinase in vivo. Two transcript variants encoding two different isoforms have been found for this gene.

## Recommended Dilutions

**IHC-P** 1:50 - 1:100

**ELISA** Recommended starting concentration is 1 µg/mL. Please optimize the concentration based on your specific assay requirements.

## Immunogen Information

### Gene ID

9261

### Swiss Prot

P49137

### Immunogen

Synthetic peptide. This information is considered to be commercially sensitive.

### Synonyms

MK2; MK-2; MAPKAP-K2; Phospho-MAPKAPK-2/MK2-T334

## Contact

☎ | 400-999-6126

✉ | [cn.market@abclonal.com.cn](mailto:cn.market@abclonal.com.cn)

🌐 | [www.abclonal.com.cn](http://www.abclonal.com.cn)

## Product Information

### Source

Rabbit

### Isotype

IgG

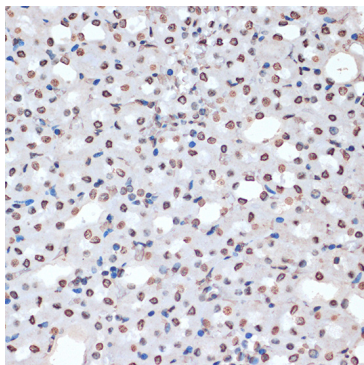
### Purification

Affinity purification

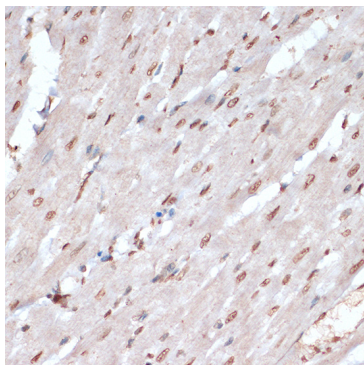
### Storage

Store at -20°C. Avoid freeze / thaw cycles.

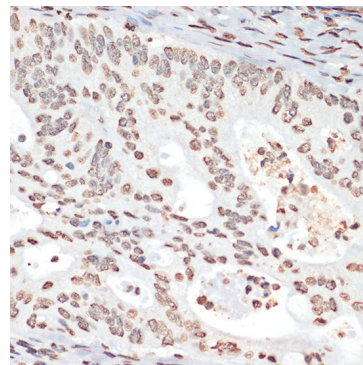
Buffer: PBS with 0.01% thimerosal, 50% glycerol, pH7.3.



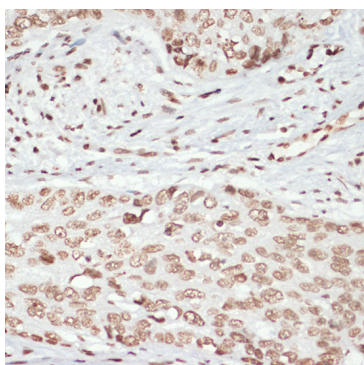
Immunohistochemistry analysis of paraffin-embedded Mouse kidney using Phospho-MAPKAPK-2/MK2-T334 Rabbit pAb (AP0396) at dilution of 1:200 (40x lens). Microwave antigen retrieval performed with 0.01M Tris/EDTA Buffer (pH 9.0) prior to IHC staining.



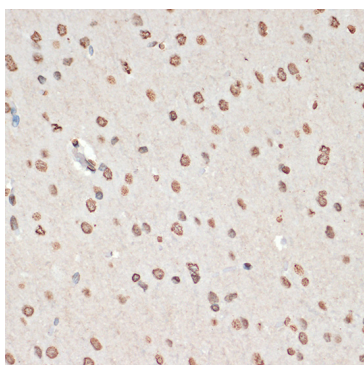
Immunohistochemistry analysis of paraffin-embedded Rat heart using Phospho-MAPKAPK-2/MK2-T334 Rabbit pAb (AP0396) at dilution of 1:200 (40x lens). Microwave antigen retrieval performed with 0.01M Tris/EDTA Buffer (pH 9.0) prior to IHC staining.



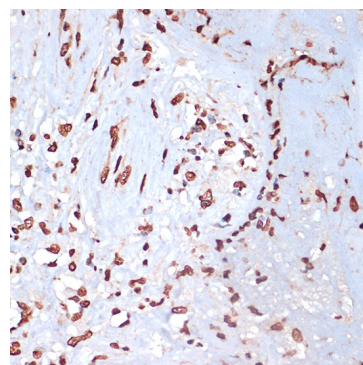
Immunohistochemistry analysis of paraffin-embedded Human colon cancer using Phospho-MAPKAPK-2/MK2-T334 Rabbit pAb (AP0396) at dilution of 1:200 (40x lens). Microwave antigen retrieval performed with 0.01M Tris/EDTA Buffer (pH 9.0) prior to IHC staining.



Immunohistochemistry analysis of paraffin-embedded Human lung cancer using Phospho-MAPKAPK-2/MK2-T334 Rabbit pAb (AP0396) at dilution of 1:200 (40x lens). Microwave antigen retrieval performed with 0.01M Tris/EDTA Buffer (pH 9.0) prior to IHC staining.



Immunohistochemistry analysis of paraffin-embedded Rat brain using Phospho-MAPKAPK-2/MK2-T334 Rabbit pAb (AP0396) at dilution of 1:200 (40x lens). Microwave antigen retrieval performed with 0.01M Tris/EDTA Buffer (pH 9.0) prior to IHC staining.



Immunohistochemistry analysis of paraffin-embedded Human placenta using Phospho-MAPKAPK-2/MK2-T334 Rabbit pAb (AP0396) at dilution of 1:200 (40x lens). Microwave antigen retrieval performed with 0.01M Tris/EDTA Buffer (pH 9.0) prior to IHC staining.