

Phospho-eIF2 α -S49 Rabbit pAb

Catalog No.: AP0341 **4 Publications**

Basic Information

Observed MW

40kDa

Calculated MW

36kDa

Category

Primary antibody

Applications

WB, IHC-P

Cross-Reactivity

Human, Mouse, Rat

Background

The translation initiation factor EIF2 catalyzes the first regulated step of protein synthesis initiation, promoting the binding of the initiator tRNA to 40S ribosomal subunits. Binding occurs as a ternary complex of methionyl-tRNA, EIF2, and GTP. EIF2 is composed of 3 nonidentical subunits, the 36-kD EIF2-alpha subunit (EIF2S1), the 38-kD EIF2-beta subunit (EIF2S2; MIM 603908), and the 52-kD EIF2-gamma subunit (EIF2S3; MIM 300161). The rate of formation of the ternary complex is modulated by the phosphorylation state of EIF2-alpha (Ernst et al., 1987 [PubMed 2948954]).

Recommended Dilutions

WB 1:500 - 1:2000

IHC-P 1:50 - 1:100

Immunogen Information

Gene ID

1965

Swiss Prot

P05198

Immunogen

A phospho specific peptide corresponding to residues surrounding S49 of human EIF2S1

Synonyms

EIF2; EIF-2; EIF2A; EIF-2A; EIF-2alpha; Phospho-eIF2 α -S49

Contact

☎ | 400-999-6126

✉ | cn.market@abclonal.com.cn

🌐 | www.abclonal.com.cn

Product Information

Source

Rabbit

Isotype

IgG

Purification

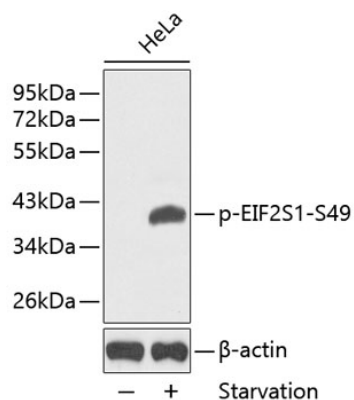
Affinity purification

Storage

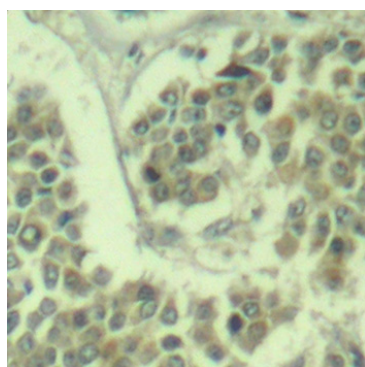
Store at -20°C. Avoid freeze / thaw cycles.

Buffer: PBS with 0.02% sodium azide, 50% glycerol, pH 7.3.

Validation Data



Western blot analysis of lysates from HeLa cells, using Phospho-eIF2 α -S49 Rabbit pAb (AP0341).
Secondary antibody: HRP Goat Anti-Rabbit IgG (H+L) (AS014) at 1:10000 dilution.
Lysates/proteins: 25 μ g per lane.
Blocking buffer: 3% BSA.



Immunohistochemistry analysis of Phospho-eIF2 α -S49 in paraffin-embedded human breast carcinoma using Phospho-eIF2 α -S49 Rabbit pAb (AP0341). Perform microwave antigen retrieval with 10 mM Tris/EDTA buffer pH 9.0 before commencing with IHC staining protocol.