

# Phospho-CDK2-T160 Rabbit pAb

Catalog No.: AP0325

3 Publications

## Basic Information

### Observed MW

32kDa/34kDa

### Calculated MW

34kDa

### Category

Primary antibody

### Applications

WB, IHC-P, ELISA

### Cross-Reactivity

Human, Mouse, Rat

## Background

This gene encodes a member of a family of serine/threonine protein kinases that participate in cell cycle regulation. The encoded protein is the catalytic subunit of the cyclin-dependent protein kinase complex, which regulates progression through the cell cycle. Activity of this protein is especially critical during the G1 to S phase transition. This protein associates with and regulated by other subunits of the complex including cyclin A or E, CDK inhibitor p21Cip1 (CDKN1A), and p27Kip1 (CDKN1B). Alternative splicing results in multiple transcript variants.

## Recommended Dilutions

**WB** 1:100 - 1:500**IHC-P** 1:50 - 1:100

**ELISA** Recommended starting concentration is 1 µg/mL. Please optimize the concentration based on your specific assay requirements.

## Immunogen Information

### Gene ID

1017

### Swiss Prot

P24941

### Immunogen

Synthetic peptide. This information is considered to be commercially sensitive.

### Synonyms

CDKN2; p33(CDK2); Phospho-CDK2-T160

## Contact

 | 400-999-6126 | [cn.market@abclonal.com.cn](mailto:cn.market@abclonal.com.cn) | [www.abclonal.com.cn](http://www.abclonal.com.cn)

## Product Information

### Source

Rabbit

### Isotype

IgG

### Purification

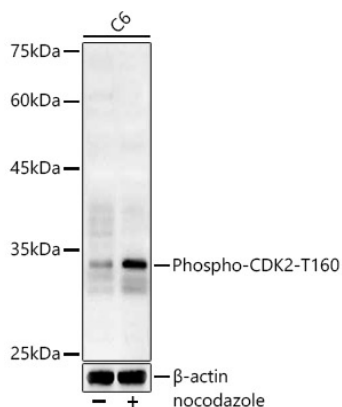
Affinity purification

### Storage

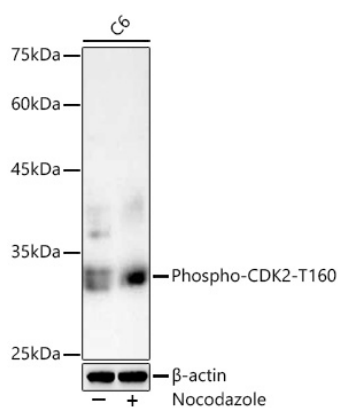
Store at -20°C. Avoid freeze / thaw cycles.

Buffer: PBS containing 50% glycerol, preserved with proclin300 or sodium azide (as specified on the Certificate of Analysis), pH 7.3.

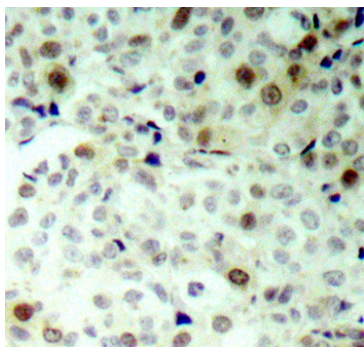
## Validation Data



Western blot analysis of lysates from C6 cells, using Phospho-CDK2-T160 Rabbit pAb (AP0325) at 1:400 dilution. C6 cells were treated with Nocodazole (10 ng/ml) at 37°C for 20 hours.  
Secondary antibody: HRP-conjugated Goat anti-Rabbit IgG (H+L) (AS014) at 1:10000 dilution.  
Lysates/proteins: 25µg per lane.  
Blocking buffer: 3% nonfat dry milk in TBST.  
Detection: ECL Basic Kit (RM00020).  
Exposure time: 90s.



Western blot analysis of lysates from C6 cells using Phospho-CDK2-T160 Rabbit pAb (AP0325) at 1:1000 dilution. C6 cells were treated with Nocodazole (10 ng/ml) at 37°C for 20 hours.  
Secondary antibody: HRP-conjugated Goat anti-Rabbit IgG (H+L) (AS014) at 1:10000 dilution.  
Lysates/proteins: 20 µg per lane.  
Blocking buffer: 3% nonfat dry milk in TBST.  
Detection: ECL Basic Kit (RM00020).  
Exposure time: 3s.



Immunohistochemistry analysis of paraffin-embedded Human breast carcinoma using Phospho-CDK2-T160 Rabbit pAb (AP0325). Microwave antigen retrieval performed with 0.01M Tris/EDTA Buffer (pH 9.0) prior to IHC staining.