

# Phospho-STAT2-Y690 Rabbit pAb

Catalog No.: AP0284

12 Publications

## Basic Information

### Observed MW

97 kDa/113 kDa

### Calculated MW

98kDa

### Category

Primary antibody

### Applications

WB, ELISA

### Cross-Reactivity

Human, Mouse, Rat

## Background

The protein encoded by this gene is a member of the STAT protein family. In response to cytokines and growth factors, STAT family members are phosphorylated by the receptor associated kinases, and then form homo- or heterodimers that translocate to the cell nucleus where they act as transcription activators. In response to interferon (IFN), this protein forms a complex with STAT1 and IFN regulatory factor family protein p48 (ISGF3G), in which this protein acts as a transactivator, but lacks the ability to bind DNA directly. The protein mediates innate antiviral activity. Mutations in this gene result in Immunodeficiency 44.

## Recommended Dilutions

**WB** 1:1000 - 1:2000**ELISA** Recommended starting concentration is 1 µg/mL. Please optimize the concentration based on your specific assay requirements.

## Immunogen Information

### Gene ID

6773

### Swiss Prot

P52630

### Immunogen

Synthetic peptide. This information is considered to be commercially sensitive.

### Synonyms

P113; IMD44; ISGF-3; PTORCH3; STAT113; Phospho-STAT2-Y690

## Contact

 | 400-999-6126 | [cn.market@abclonal.com.cn](mailto:cn.market@abclonal.com.cn) | [www.abclonal.com.cn](http://www.abclonal.com.cn)

## Product Information

### Source

Rabbit

### Isotype

IgG

### Purification

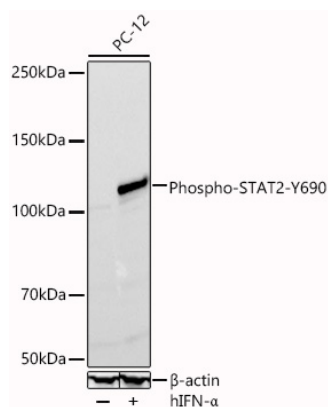
Affinity purification

### Storage

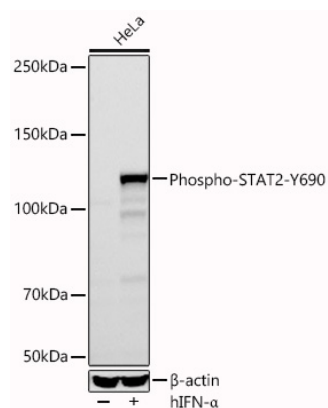
Store at -20°C. Avoid freeze / thaw cycles.

Buffer: PBS with 0.09% Sodium azide, 50% glycerol, pH7.3.

## Validation Data



Western blot analysis of lysates from HeLa cells using Phospho-STAT2-Y690 Rabbit pAb (AP0284) at 1:1000 dilution incubated overnight at 4°C. HeLa cells were treated with hIFN-α (100 ng/mL) at 37°C for 30 minutes after serum-starvation overnight.  
Secondary antibody: HRP-conjugated Goat anti-Rabbit IgG (H+L) (AS014) at 1:10000 dilution.  
Lysates/proteins: 30 µg per lane.  
Blocking buffer: 3% nonfat dry milk in TBST.  
Detection: ECL Basic Kit (RM00020).  
Exposure time: 90 s.



Western blot analysis of lysates from PC-12 cells using Phospho-STAT2-Y690 Rabbit pAb (AP0284) at 1:1000 dilution incubated overnight at 4°C. PC-12 cells were treated with hIFN-α (100 ng/mL) at 37°C for 30 minutes after serum-starvation overnight.  
Secondary antibody: HRP-conjugated Goat anti-Rabbit IgG (H+L) (AS014) at 1:10000 dilution.  
Lysates/proteins: 30 µg per lane.  
Blocking buffer: 3% nonfat dry milk in TBST.  
Detection: ECL Basic Kit (RM00020).  
Exposure time: 180 s.