

Phospho-ERK1-T202 + ERK2-T185 Rabbit pAb

Catalog No.: AP0234

6 Publications

Basic Information

Observed MW

42kDa/44kDa

Calculated MW

38kDa/40kDa/43kDa

Category

Primary antibody

Applications

WB, IHC-P, IF/ICC, ELISA

Cross-Reactivity

Human, Mouse, Rat

Background

The protein encoded by this gene is a member of the MAP kinase family. MAP kinases, also known as extracellular signal-regulated kinases (ERKs), act in a signaling cascade that regulates various cellular processes such as proliferation, differentiation, and cell cycle progression in response to a variety of extracellular signals. This kinase is activated by upstream kinases, resulting in its translocation to the nucleus where it phosphorylates nuclear targets. Alternatively spliced transcript variants encoding different protein isoforms have been described.

Recommended Dilutions

WB 1:500 - 1:1000**IHC-P** 1:50 - 1:100**IF/ICC** 1:20 - 1:100

ELISA Recommended starting concentration is 1 µg/mL. Please optimize the concentration based on your specific assay requirements.

Immunogen Information

Gene ID

5594/5595

Swiss Prot

P28482/P27361

Immunogen

Synthetic peptide. This information is considered to be commercially sensitive.

Synonyms

Contact

 400-999-6126 cn.market@abclonal.com.cn www.abclonal.com.cn

Product Information

Source

Rabbit

Isotype

IgG

Purification

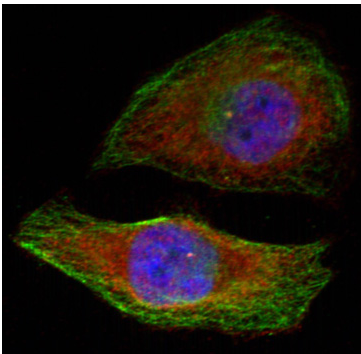
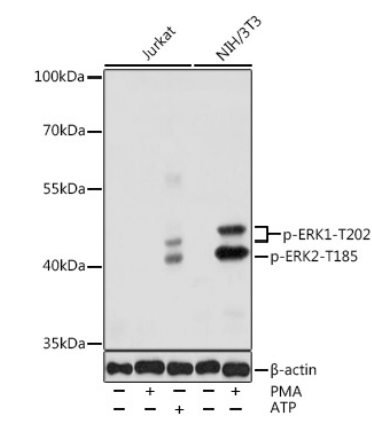
Affinity purification

Storage

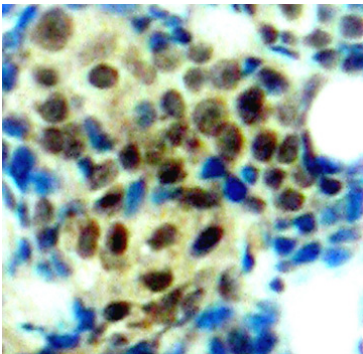
Store at -20°C. Avoid freeze / thaw cycles.

Buffer: PBS with 0.02% sodium azide, 50% glycerol, pH7.3.

Validation Data



Immunofluorescence analysis of methanol-fixed HeLa cells showing cytoplasmic, nuclear staining using Phospho-ERK1-T202 + ERK2-T185 Rabbit pAb (AP0234).



Immunohistochemistry analysis of paraffin-embedded Human breast carcinoma tissue, using Phospho-ERK1-T202 + ERK2-T185 Rabbit pAb (AP0234). Microwave antigen retrieval performed with 0.01M Tris/EDTA Buffer (pH 9.0) prior to IHC staining.