

Phospho-CFL1-S3 Rabbit pAb

Catalog No.: AP0178

6 Publications

Basic Information

Observed MW

18kDa

Calculated MW

19kDa

Category

Primary antibody

Applications

WB, IHC-P, IF/ICC, ELISA

Cross-Reactivity

Human, Mouse, Rat

Background

The protein encoded by this gene can polymerize and depolymerize F-actin and G-actin in a pH-dependent manner. Increased phosphorylation of this protein by LIM kinase aids in Rho-induced reorganization of the actin cytoskeleton. Cofilin is a widely distributed intracellular actin-modulating protein that binds and depolymerizes filamentous F-actin and inhibits the polymerization of monomeric G-actin in a pH-dependent manner. It is involved in the translocation of actin-cofilin complex from cytoplasm to nucleus.

Recommended Dilutions

WB 1:500 - 1:5000

IHC-P 1:50 - 1:100

IF/ICC 1:100 - 1:200

ELISA Recommended starting concentration is 1 µg/mL. Please optimize the concentration based on your specific assay requirements.

Immunogen Information

Gene ID

1072

Swiss Prot

P23528

Immunogen

Synthetic peptide. This information is considered to be commercially sensitive.

Synonyms

CFL; cofilin; HEL-S-15; Phospho-CFL1-S3

Contact

☎ | 400-999-6126

✉ | cn.market@abclonal.com.cn

🌐 | www.abclonal.com.cn

Product Information

Source

Rabbit

Isotype

IgG

Purification

Affinity purification

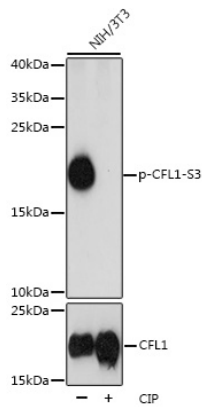
Storage

Store at -20°C. Avoid freeze / thaw cycles.

Buffer: PBS, pH 7.3, containing 50% glycerol. Preserved with Proclin300 or sodium azide.

May contain 0.05% BSA as specified on the Certificate of Analysis.

Validation Data



Western blot analysis of lysates from NIH/3T3 cells, using Phospho-CFL1-S3 Rabbit pAb (A1704). NIH/3T3 cells were treated by CIP(20uL/400ul) at 37°C for 1 hour.

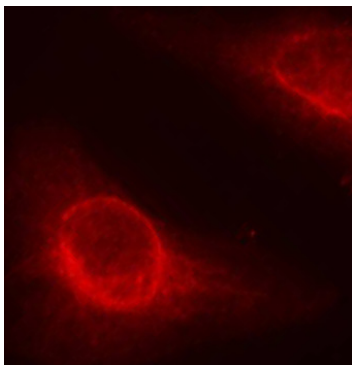
Secondary antibody: HRP-conjugated Goat anti-Rabbit IgG (H+L) (AS014) at 1:10000 dilution.

Lysates/proteins: 25µg per lane.

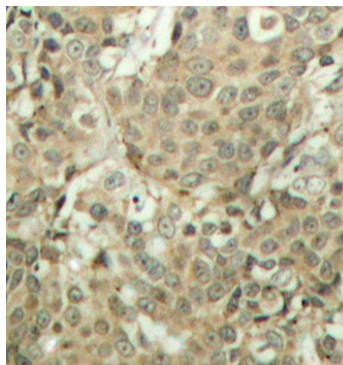
Blocking buffer: 3% BSA.

Detection: ECL Basic Kit (RM00020).

Exposure time: 3s.



Immunofluorescence analysis of methanol-fixed HeLa cells using Phospho-CFL1-S3 Rabbit pAb (AP0178).



Immunohistochemistry analysis of paraffin-embedded Human breast carcinoma tissue, using Phospho-CFL1-S3 Rabbit pAb (AP0178). Microwave antigen retrieval performed with 0.01M Tris/EDTA Buffer (pH 9.0) prior to IHC staining.