

# Phospho-Raf1-S621 Rabbit pAb

Catalog No.: AP0087

## Basic Information

### Observed MW

73kDa

### Calculated MW

73kDa

### Category

Primary antibody

### Applications

ELISA, WB, IP

### Cross-Reactivity

Human

## Background

This gene is the cellular homolog of viral raf gene (v-raf). The encoded protein is a MAP kinase kinase kinase (MAP3K), which functions downstream of the Ras family of membrane associated GTPases to which it binds directly. Once activated, the cellular RAF1 protein can phosphorylate to activate the dual specificity protein kinases MEK1 and MEK2, which in turn phosphorylate to activate the serine/threonine specific protein kinases, ERK1 and ERK2. Activated ERKs are pleiotropic effectors of cell physiology and play an important role in the control of gene expression involved in the cell division cycle, apoptosis, cell differentiation and cell migration. Mutations in this gene are associated with Noonan syndrome 5 and LEOPARD syndrome 2.

## Recommended Dilutions

**WB** 1:500 - 1:2000

**IP** 0.5µg-4µg antibody for  
200µg-400µg extracts of  
whole cells

## Immunogen Information

### Gene ID

5894

### Swiss Prot

P04049

### Immunogen

A synthetic phosphorylated peptide around S621 of human Phospho-Raf1-S621 (NP\_002871.1).

### Synonyms

NS5; CRAF; Raf-1; c-Raf; CMD1NN; Phospho-Raf1-S621

## Contact

☎ | 400-999-6126

✉ | [cn.market@abclonal.com.cn](mailto:cn.market@abclonal.com.cn)

🌐 | [www.abclonal.com.cn](http://www.abclonal.com.cn)

## Product Information

### Source

Rabbit

### Isotype

IgG

### Purification

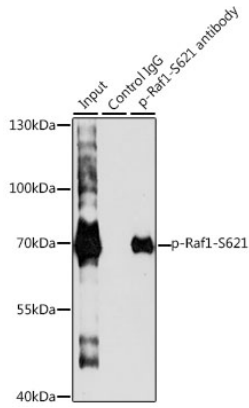
Affinity purification

### Storage

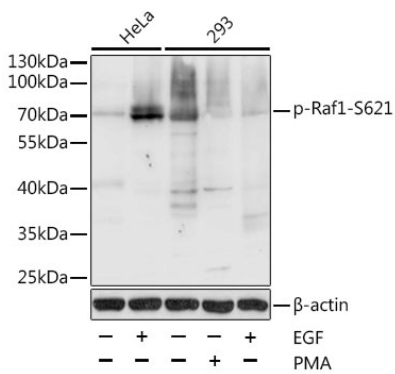
Store at -20°C. Avoid freeze / thaw cycles.

Buffer: PBS with 0.02% sodium azide, 50% glycerol, pH7.3.

## Validation Data



Immunoprecipitation analysis of 200  $\mu$ g extracts of HeLa cells, using 3  $\mu$ g Phospho-Raf1-S621 pAb (AP0087). Western blot was performed from the immunoprecipitate using Phospho-Raf1-S621 pAb (AP0087) at a dilution of 1:1000. HeLa cells were treated by EGF (100 ng/mL) at 37°C for 30 minutes after serum-starvation overnight.



Western blot analysis of lysates from HeLa and 293T cells, using Phospho-Raf1-S621 Rabbit pAb (AP0087) at 1:1000 dilution. HeLa cells were treated by EGF (100ng/mL) for 30 minutes after serum-starvation overnight. 293T cells were treated by PMA/TPA (200nM) for 30 minutes or treated by EGF (25 $\mu$ g/mL) for 30 minutes after serum-starvation overnight.

Secondary antibody: HRP Goat Anti-Rabbit IgG (H+L) (AS014) at 1:10000 dilution.

Lysates/proteins: 25 $\mu$ g per lane.

Blocking buffer: 3% BSA.