

Phospho-Rac1/2/3-S71 Rabbit pAb

Catalog No.: AP0086

2 Publications

Basic Information

Observed MW

28kDa

Calculated MW

21kDa

Category

Primary antibody

Applications

WB, ELISA

Cross-Reactivity

Human, Rat

Background

The protein encoded by this gene is a GTPase which belongs to the RAS superfamily of small GTP-binding proteins. Members of this superfamily appear to regulate a diverse array of cellular events, including the control of cell growth, cytoskeletal reorganization, and the activation of protein kinases. Two transcript variants encoding different isoforms have been found for this gene.

Recommended Dilutions

WB 1:500 - 1:1000

ELISA Recommended starting concentration is 1 µg/mL. Please optimize the concentration based on your specific assay requirements.

Immunogen Information

Gene ID

5879/5880/5881

Swiss Prot

P63000/P15153/P60763

Immunogen

Synthetic peptide. This information is considered to be commercially sensitive.

Synonyms

MIG5; MRD48; Rac-1; TC-25; p21-Rac1; Phospho-Rac1/2/3-S71

Contact

☎ | 400-999-6126

✉ | cn.market@abclonal.com.cn

🌐 | www.abclonal.com.cn

Product Information

Source

Rabbit

Isotype

IgG

Purification

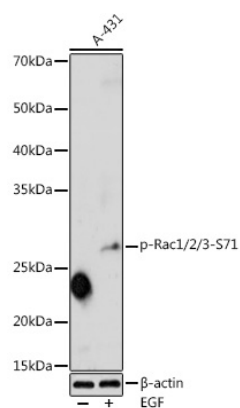
Affinity purification

Storage

Store at -20°C. Avoid freeze / thaw cycles.

Buffer: PBS containing 50% glycerol, preserved with proclin300 or sodium azide (as specified on the Certificate of Analysis), pH 7.3.

Validation Data



Western blot analysis of lysates from A-431 cells, using Phospho-Rac1/2/3-S71 Rabbit pAb (AP0086) at 1:1000 dilution. A-431 cells were treated with EGF (25 µg/mL) at 37°C for 30 minutes after serum-starvation overnight.

Secondary antibody: HRP-conjugated Goat anti-Rabbit IgG (H+L) (AS014) at 1:10000 dilution.

Lysates/proteins: 25µg per lane.

Blocking buffer: 3% nonfat dry milk in TBST.

Detection: ECL Enhanced Kit (RM00021).

Exposure time: 180s.