

# Phospho-GSK3 $\beta$ -S9 Rabbit pAb

Catalog No.: AP0039SP **60 Publications**

## Basic Information

### Observed MW

46 kDa

### Calculated MW

47 kDa/48 kDa

### Category

Primary antibody

### Applications

WB,IF/ICC,ELISA

### Cross-Reactivity

Human, Mouse, Rat

## Background

The protein encoded by this gene is a serine-threonine kinase belonging to the glycogen synthase kinase subfamily. It is a negative regulator of glucose homeostasis and is involved in energy metabolism, inflammation, ER-stress, mitochondrial dysfunction, and apoptotic pathways. Defects in this gene have been associated with Parkinson disease and Alzheimer disease.

## Recommended Dilutions

**WB** 1:3000 - 1:10000

**IF/ICC** 1:200 - 1:1200

**ELISA** Recommended starting concentration is 1  $\mu$ g/mL. Please optimize the concentration based on your specific assay requirements. For high-ratio antibody dilutions ( $\geq$ 1:10000) a sequential dilution method is strongly recommended to ensure measurement accuracy.

## Immunogen Information

### Gene ID

2932

### Swiss Prot

P49841

### Immunogen

This information is considered to be commercially sensitive.

### Synonyms

GSK3B; gsk-3 $\beta$ ; Phospho-GSK3 $\beta$ -S9

## Product Information

### Source

Rabbit

### Isotype

IgG

### Purification

Affinity purification

### Storage

Store at -20°C. Avoid freeze / thaw cycles.

Buffer: PBS, pH 7.3, containing 50% glycerol. Preserved with Proclin300 or sodium azide.

May contain 0.05% BSA as specified on the Certificate of Analysis.

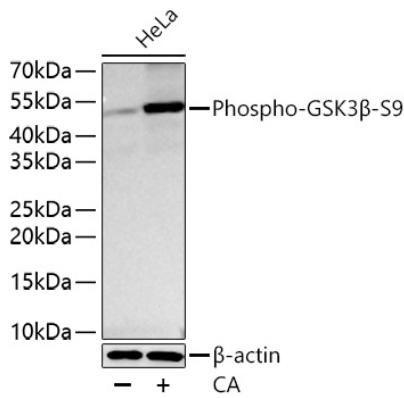
## Contact

☎ | 400-999-6126

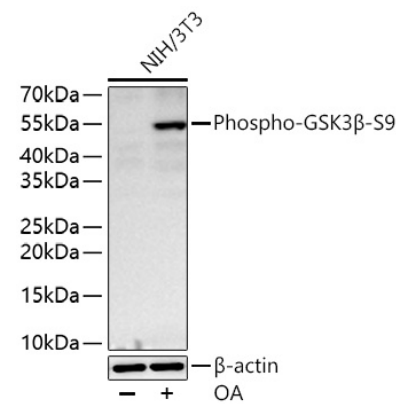
✉ | [cn.market@abclonal.com.cn](mailto:cn.market@abclonal.com.cn)

🌐 | [www.abclonal.com.cn](http://www.abclonal.com.cn)

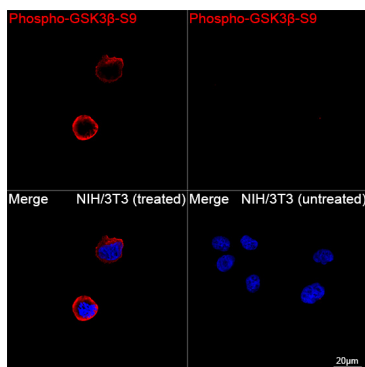
## Validation Data



Western blot analysis of lysates from HeLa cells using Phospho-GSK3β-S9 Rabbit pAb (AP0039SP) at 1:5000 dilution incubated overnight at 4°C. HeLa cells were treated with CA (100 nM) at 37°C for 1 hours. Secondary antibody: HRP-conjugated Goat anti-Rabbit IgG (H+L) (AS014) at 1:10000 dilution. Lysates/proteins: 30 µg per lane. Blocking buffer: 3% nonfat dry milk in TBST. Detection: ECL Basic Kit (RM00020). Exposure time: 45 s.



Western blot analysis of lysates from NIH/3T3 cells using Phospho-GSK3β-S9 Rabbit pAb (AP0039SP) at 1:5000 dilution incubated overnight at 4°C. NIH/3T3 cells were treated with OA (200 nM) at 37°C for 1 hours. Secondary antibody: HRP-conjugated Goat anti-Rabbit IgG (H+L) (AS014) at 1:10000 dilution. Lysates/proteins: 30 µg per lane. Blocking buffer: 3% nonfat dry milk in TBST. Detection: ECL Basic Kit (RM00020). Exposure time: 45 s.



Confocal imaging of NIH/3T3 cells (treated with OA) and NIH/3T3 cells (untreated) using Phospho-GSK3β-S9 Rabbit pAb (AP0039SP, dilution 1:1000) followed by a further incubation with Cy3-conjugated Goat anti-Rabbit IgG (H+L) (AS007, dilution 1:500) (Red). DAPI was used for nuclear staining (Blue). Objective: 100x.