

# Phospho-c-Fos-T232 Rabbit pAb

Catalog No.: AP0038

5 Publications

## Basic Information

### Observed MW

62kDa

### Calculated MW

41kDa

### Category

Primary antibody

### Applications

ELISA, WB

### Cross-Reactivity

Human, Mouse, Rat

## Background

The Fos gene family consists of 4 members: FOS, FOSB, FOSL1, and FOSL2. These genes encode leucine zipper proteins that can dimerize with proteins of the JUN family, thereby forming the transcription factor complex AP-1. As such, the FOS proteins have been implicated as regulators of cell proliferation, differentiation, and transformation. In some cases, expression of the FOS gene has also been associated with apoptotic cell death.

## Recommended Dilutions

WB 1:500 - 1:2000

## Immunogen Information

### Gene ID

2353

### Swiss Prot

P01100

### Immunogen

A synthetic phosphorylated peptide around T232 of human c-Fos (NP\_005243.1).

### Synonyms

p55; AP-1; C-FOS; Phospho-c-Fos-T232

## Contact

☎ | 400-999-6126

✉ | [cn.market@abclonal.com.cn](mailto:cn.market@abclonal.com.cn)

🌐 | [www.abclonal.com.cn](http://www.abclonal.com.cn)

## Product Information

### Source

Rabbit

### Isotype

IgG

### Purification

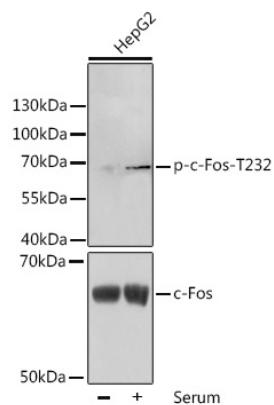
Affinity purification

### Storage

Store at -20°C. Avoid freeze / thaw cycles.

Buffer: PBS with 0.02% sodium azide, 50% glycerol, pH7.3.

# Validation Data



Western blot analysis of lysates from HepG2 cells, using Phospho-c-Fos-T232 Rabbit pAb (AP0038) at 1:1000 dilution or c-Fos antibody (A17351).HepG2 cells were treated by 10% FBS for after serum-starvation overnight.  
Secondary antibody: HRP Goat Anti-Rabbit IgG (H+L) (AS014) at 1:10000 dilution.  
Lysates/proteins: 25µg per lane.  
Blocking buffer: 3% BSA.