

Phospho-ELK1-S383 Rabbit pAb

Catalog No.: AP0033 **2 Publications**

Basic Information

Observed MW

45kDa

Calculated MW

45kDa

Category

Primary antibody

Applications

WB,IHC-P,ELISA

Cross-Reactivity

Human, Mouse, Rat

Background

This gene is a member of the Ets family of transcription factors and of the ternary complex factor (TCF) subfamily. Proteins of the TCF subfamily form a ternary complex by binding to the the serum response factor and the serum response element in the promoter of the c-fos proto-oncogene. The protein encoded by this gene is a nuclear target for the ras-raf-MAPK signaling cascade. This gene produces multiple isoforms by using alternative translational start codons and by alternative splicing. Related pseudogenes have been identified on chromosomes 7 and 14.

Recommended Dilutions

WB 1:500 - 1:1000

IHC-P 1:50 - 1:200

ELISA Recommended starting concentration is 1 µg/mL. Please optimize the concentration based on your specific assay requirements.

Immunogen Information

Gene ID

2002

Swiss Prot

P19419

Immunogen

Synthetic peptide. This information is considered to be commercially sensitive.

Synonyms

ELK1; Phospho-ELK1-S383

Contact

☎ | 400-999-6126

✉ | cn.market@abclonal.com.cn

🌐 | www.abclonal.com.cn

Product Information

Source

Rabbit

Isotype

IgG

Purification

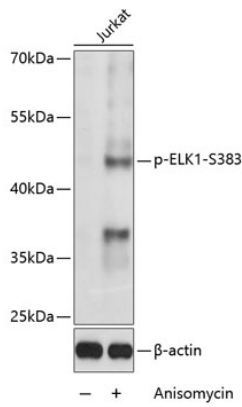
Affinity purification

Storage

Store at -20°C. Avoid freeze / thaw cycles.

Buffer: PBS containing 50% glycerol, preserved with proclin300 or sodium azide (as specified on the Certificate of Analysis), pH 7.3.

Validation Data



Western blot analysis of lysates from Jurkat cells, using Phospho-ELK1-S383 Rabbit pAb (AP0033) at 1:1000 dilution. Jurkat cells were treated with Anisomycin (5µg/mL) for 30 minutes after serum-starvation overnight.

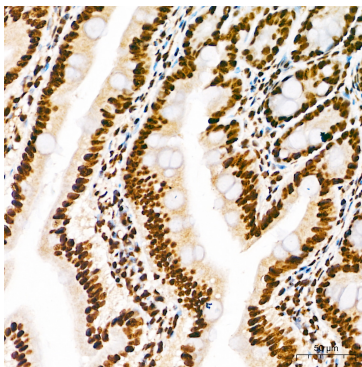
Secondary antibody: HRP-conjugated Goat anti-Rabbit IgG (H+L) (AS014) at 1:10000 dilution.

Lysates/proteins: 25µg per lane.

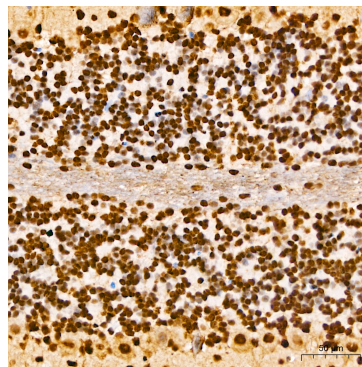
Blocking buffer: 3% BSA.

Detection: ECL Basic Kit (RM00020).

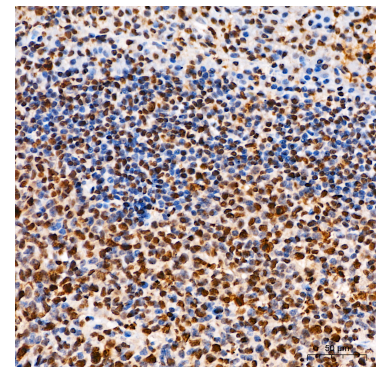
Exposure time: 10s.



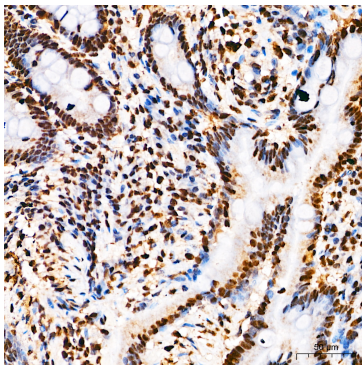
Immunohistochemistry analysis of paraffin-embedded Rat intestine tissue using Phospho-ELK1-S383 Rabbit pAb (AP0033) at a dilution of 1:200 (40x lens). High pressure antigen retrieval performed with 0.01M Citrate Buffer(pH 6.0) prior to IHC staining.



Immunohistochemistry analysis of paraffin-embedded Mouse cerebellum tissue using Phospho-ELK1-S383 Rabbit pAb (AP0033) at a dilution of 1:200 (40x lens). High pressure antigen retrieval performed with 0.01M Citrate Buffer(pH 6.0) prior to IHC staining.



Immunohistochemistry analysis of paraffin-embedded Human tonsil tissue using Phospho-ELK1-S383 Rabbit pAb (AP0033) at a dilution of 1:200 (40x lens). High pressure antigen retrieval performed with 0.01M Citrate Buffer(pH 6.0) prior to IHC staining.



Immunohistochemistry analysis of paraffin-embedded Human colon tissue using Phospho-ELK1-S383 Rabbit pAb (AP0033) at a dilution of 1:200 (40x lens). High pressure antigen retrieval performed with 0.01M Citrate Buffer(pH 6.0) prior to IHC staining.