

# Phospho-EGFR-Y1068 Rabbit mAb

Catalog No.: AP0027 **Recombinant** **4 Publications**

## Basic Information

### Observed MW

175kDa

### Calculated MW

134kDa

### Category

Primary antibody

### Applications

WB, ELISA

### Cross-Reactivity

Human, Mouse

### CloneNo number

ARC0013

## Background

The protein encoded by this gene is a transmembrane glycoprotein that is a member of the protein kinase superfamily. This protein is a receptor for members of the epidermal growth factor family. EGFR is a cell surface protein that binds to epidermal growth factor, thus inducing receptor dimerization and tyrosine autophosphorylation leading to cell proliferation. Mutations in this gene are associated with lung cancer. EGFR is a component of the cytokine storm which contributes to a severe form of Coronavirus Disease 2019 (COVID-19) resulting from infection with severe acute respiratory syndrome coronavirus-2 (SARS-CoV-2).

## Recommended Dilutions

**WB** 1:1000 - 1:6000

**ELISA** Recommended starting concentration is 1 µg/mL. Please optimize the concentration based on your specific assay requirements.

## Immunogen Information

### Gene ID

1956

### Swiss Prot

P00533

### Immunogen

Synthetic peptide. This information is considered to be commercially sensitive.

### Synonyms

ERBB; ERRP; HER1; mENA; ERBB1; PIG61; NISBD2; Phospho-EGFR-Y1068

## Contact

☎ | 400-999-6126

✉ | [cn.market@abclonal.com.cn](mailto:cn.market@abclonal.com.cn)

🌐 | [www.abclonal.com.cn](http://www.abclonal.com.cn)

## Product Information

### Source

Rabbit

### Isotype

IgG

### Purification

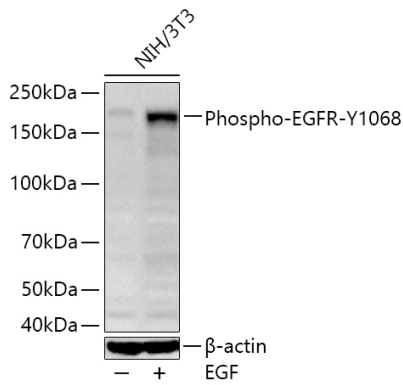
Affinity purification

### Storage

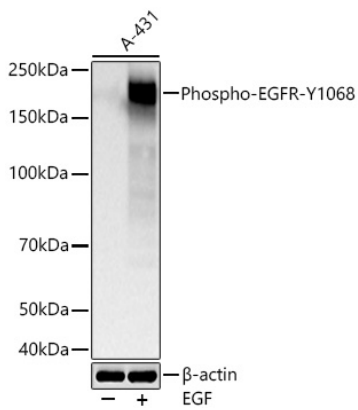
Store at -20°C. Avoid freeze / thaw cycles.

Buffer: PBS containing 50% glycerol and 0.05% BSA, preserved with proclin300 or sodium azide (as specified on the Certificate of Analysis), pH 7.3.

## Validation Data



Western blot analysis of lysates from NIH/3T3 cells using Phospho-EGFR-Y1068 Rabbit mAb (AP0027) at 1:1000 dilution incubated overnight at 4°C. NIH/3T3 cells were treated with EGF (100 ng/mL) at 37°C for 30 minutes after serum-starvation overnight.  
Secondary antibody: HRP-conjugated Goat anti-Rabbit IgG (H+L) (AS014) at 1:10000 dilution.  
Lysates/proteins: 30 µg per lane.  
Blocking buffer: 3% nonfat dry milk in TBST.  
Detection: ECL Basic Kit (RM00020).  
Exposure time: 60s.



Western blot analysis of lysates from A-431 cells using Phospho-EGFR-Y1068 Rabbit mAb (AP0027) at 1:3000 dilution incubated overnight at 4°C. A431 cells were treated with EGF (100 ng/mL) at 37°C for 30 minutes after serum-starvation overnight.  
Secondary antibody: HRP-conjugated Goat anti-Rabbit IgG (H+L) (AS014) at 1:10000 dilution.  
Lysates/proteins: 30 µg per lane.  
Blocking buffer: 3% nonfat dry milk in TBST.  
Detection: ECL Basic Kit (RM00020).  
Exposure time: 20s.